



**DESIGN & CONSTRUCTION GROUP
THE GOVERNOR NELSON A. ROCKEFELLER
EMPIRE STATE PLAZA
ALBANY, NY 12242**

ADDENDUM NO. 2 TO PROJECT NO. 45444

CONSTRUCTION WORK, HVAC WORK, PLUMBING WORK AND ELECTRICAL WORK

**PROVIDE ENCLOSED FIRING RANGE
AUBURN CORRECTIONAL FACILITY QWL SITE
3579 FRANKLIN STREET
SENNETT, NY**

February 15, 2019

NOTE: This Addendum forms a part of the Contract Documents. Insert it in the Project Manual. Acknowledge receipt of this Addendum in the space provided on the Bid Form.

ELECTRICAL WORK DRAWINGS

1. Revised Drawings:
 - a. Drawing Nos. E-102, E-105, E-502, E-503, and E-601 noted "ADDENDUM #2" dated 02.13.2019 accompany this addendum and supersede the same numbered originally issued drawings.

CONSTRUCTION WORK DRAWINGS

2. Revised Drawings:
 - a. Drawing Nos. C-102 and C-502 noted "ADDENDUM #2" dated 02.14.2019 accompany this addendum and supersede the same numbered originally issued drawings.

END OF ADDENDUM

Erik T. Deyoe, P.E.
Director, Division of Design
Design & Construction



ENERGY CONSERVATION CONSTRUCTION CODE OF NEW YORK STATE:

TO THE BEST OF MY KNOWLEDGE, BELIEF AND PROFESSIONAL JUDGEMENT, THE DRAWINGS AND SPECIFICATIONS, WHICH COMPROMISE THE CONSTRUCTION DOCUMENTS FOR THIS PROJECT, ARE IN COMPLIANCE WITH THE 2016 NEW YORK ENERGY CODE.

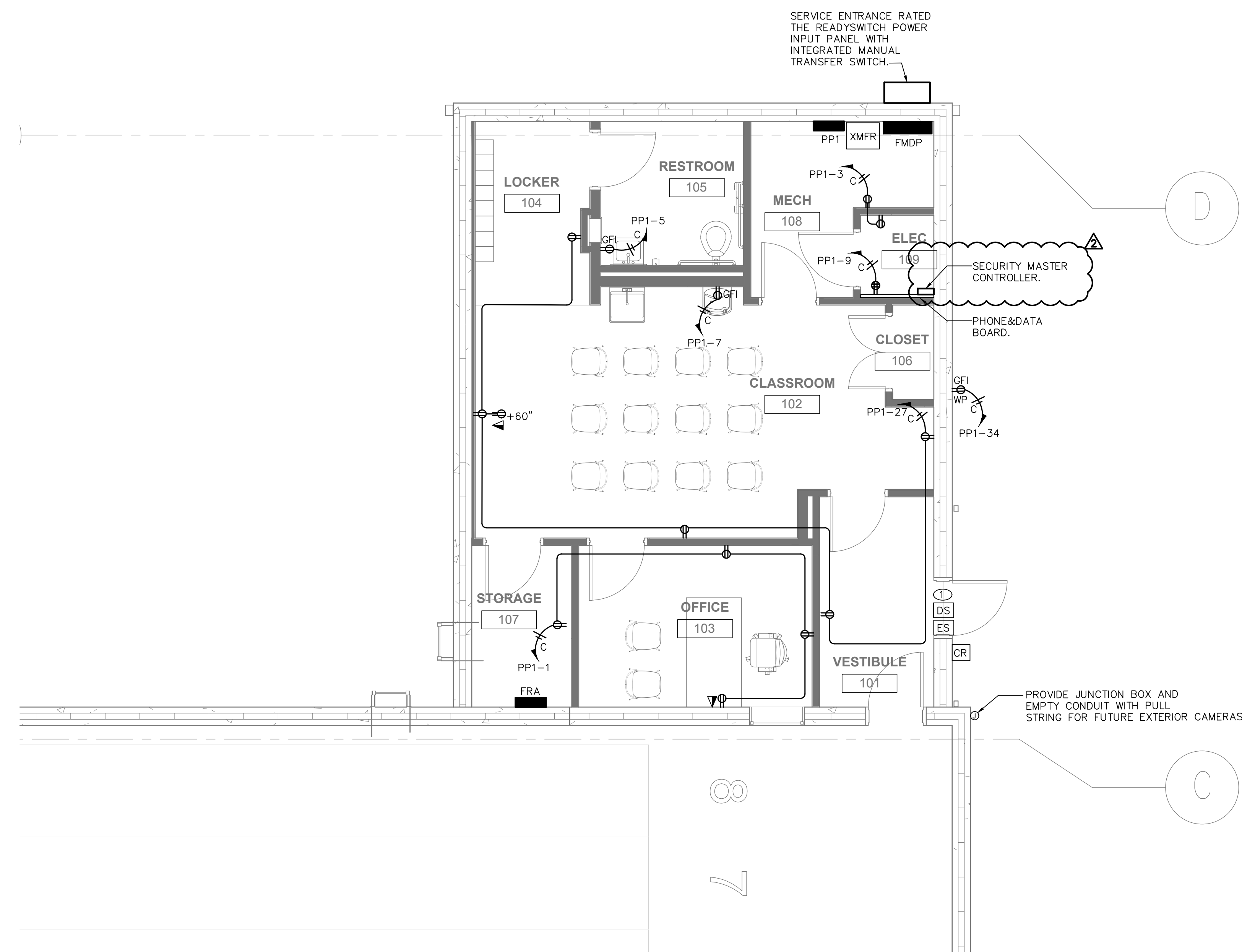
WARNING:
THE ALTERATION OF THIS MATERIAL IN ANY WAY, UNLESS DONE UNDER THE DIRECTION OF A COMPARABLE PROFESSIONAL, I.E. ARCHITECT FOR AN ARCHITECT, ENGINEER FOR AN ENGINEER OR LANDSCAPE ARCHITECT FOR A LANDSCAPE ARCHITECT, IS A VIOLATION OF THE NEW YORK STATE EDUCATION LAW AND/OR REGULATIONS AND IS A CLASS "A" MISDEMEANOR.

GENERAL NOTES:

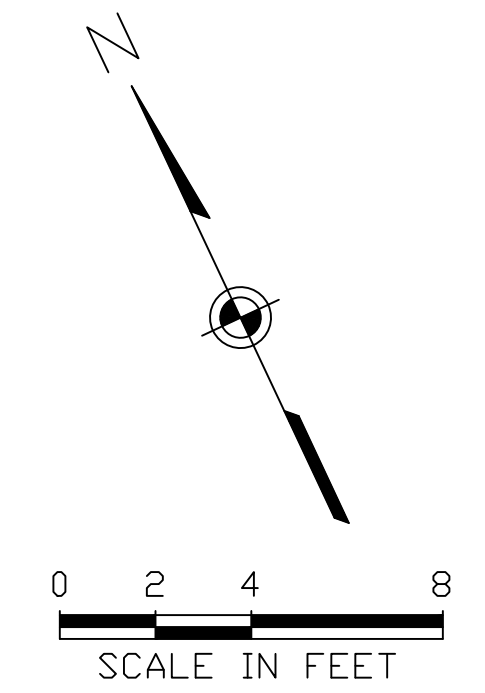
ALL RECEPTACLES, JUNCTION BOXES, & EQUIPMENT SHALL CONTAIN A LAMINATED PHENOLIC LAMINATE WITH ENGRAVED BLACK LETTERS ON WHITE SURROUND INDICATING SOURCE PANEL AND CIRCUIT NUMBER.

ELECTRICAL NOTES:

① PROVIDE 3/4" CONDUIT WITH CONDUCTORS TO CONTROLLER PANEL. SIZE CONDUCTORS PER SECURITY MANUFACTURER'S RECOMMENDATION. IN ADDITION, INTERLOCK DOOR CONTACT WITH RANGE CONDITION LIGHT.



1 ELECTRICAL FLOOR PLAN-POWER
E-102 SCALE: 1/4" = 1'-0"



CONTRACT: ELECTRICAL

TITLE: PROVIDE ENCLOSED FIRING RANGE QWL SITE

LOCATION: AUBURN CORRECTIONAL FACILITY QWL SITE
3579 FRANKLIN STREET ROAD
SENNETT, NY

CLIENT: DEPARTMENT OF CORRECTIONS AND COMMUNITY SUPERVISION

MARK	DATE	DESCRIPTION
⚠	02/13/2019	ADDENDUM #2
	10/15/2018	FINAL SUBMISSION
	5/04/2018	100% SUBMISSION
	1/18/2018	65% SCHEMATIC

PROJECT NUMBER: 45444 - E
DESIGNED BY: P. BELAVUS
DRAWN BY: P. BELAVUS
FIELD CHECK:
APPROVED: R. BLANCH

ADDENDUM #2
ELECTRICAL FLOOR PLAN - POWER

DRAWING NUMBER: E-102

ENERGY CONSERVATION CONSTRUCTION CODE OF NEW YORK STATE:

TO THE BEST OF MY KNOWLEDGE, BELIEF AND PROFESSIONAL JUDGEMENT, THE DRAWINGS AND SPECIFICATIONS, WHICH COMPROMISE THE CONSTRUCTION DOCUMENTS FOR THIS PROJECT, ARE IN COMPLIANCE WITH THE 2016 NEW YORK ENERGY CODE.

WARNING:
THE ALTERATION OF THIS MATERIAL IN ANY WAY, UNLESS DONE UNDER THE DIRECTION OF A COMPARABLE PROFESSIONAL, I.E. ARCHITECT FOR AN ARCHITECT, ENGINEER FOR AN ENGINEER OR LANDSCAPE ARCHITECT FOR A LANDSCAPE ARCHITECT, IS A VIOLATION OF THE NEW YORK STATE EDUCATION LAW AND/OR REGULATIONS AND IS A CLASS "A" MISDEMEANOR.

CONTRACT: ELECTRICAL

TITLE: PROVIDE ENCLOSED FIRING RANGE QWL SITE

LOCATION: AUBURN CORRECTIONAL FACILITY QWL SITE
3579 FRANKLIN STREET ROAD
SENNETT, NY

CLIENT: DEPARTMENT OF CORRECTIONS AND COMMUNITY SUPERVISION

MARK	DATE	DESCRIPTION
▲	02/13/2019	ADDENDUM #2
	10/15/2018	FINAL SUBMISSION
	5/04/2018	100% SUBMISSION
	1/18/2018	65% SCHEMATIC
PROJECT NUMBER:	45444 - E	
DESIGNED BY:	P. BELAVUS	
DRAWN BY:	P. BELAVUS	
FIELD CHECK:		
APPROVED:	R. BLANCH	

ADDENDUM #2
FIRING RANGE FLOOR PLAN - ELECTRICAL POWER

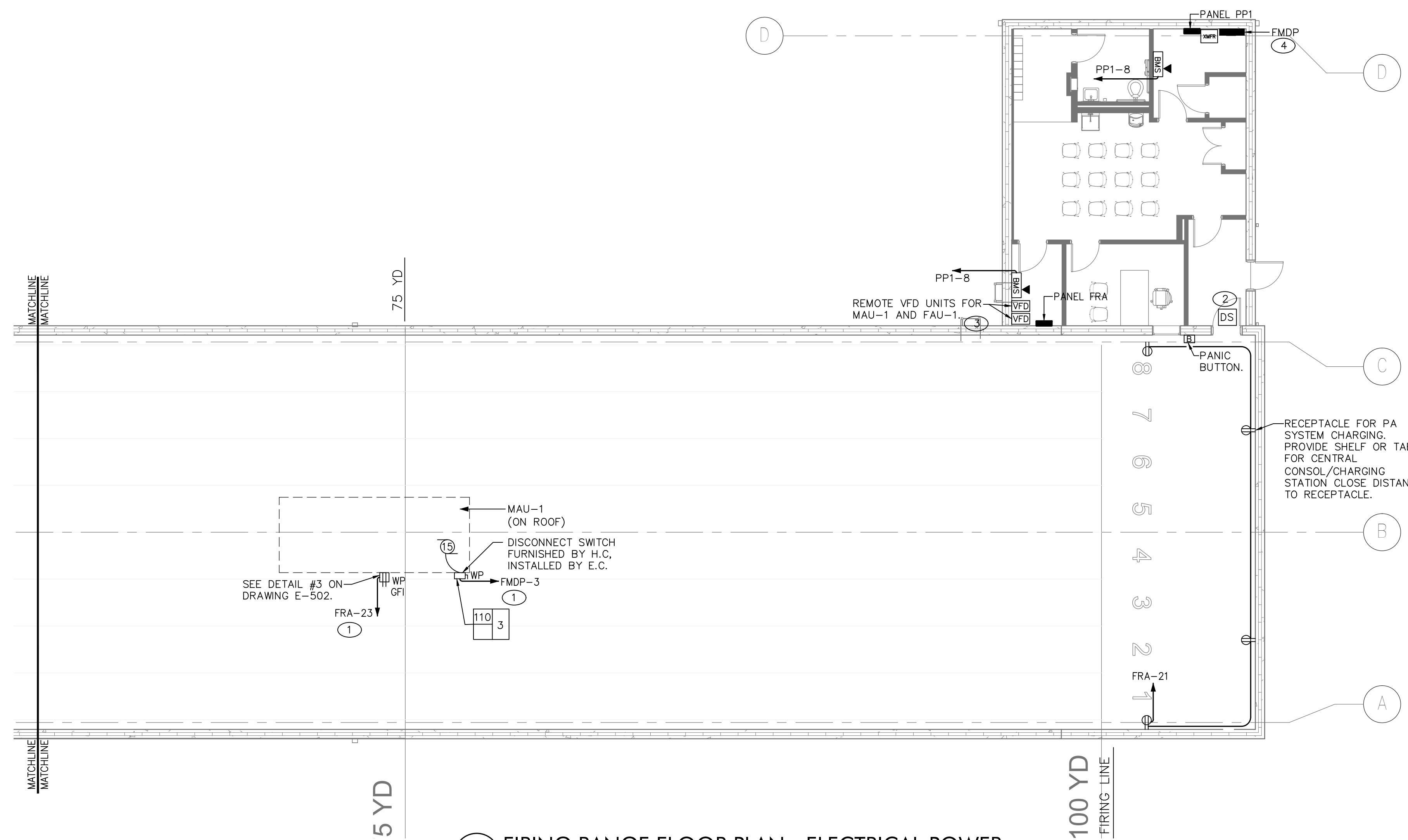
DRAWING NUMBER: E-105

ELECTRICAL NOTES:

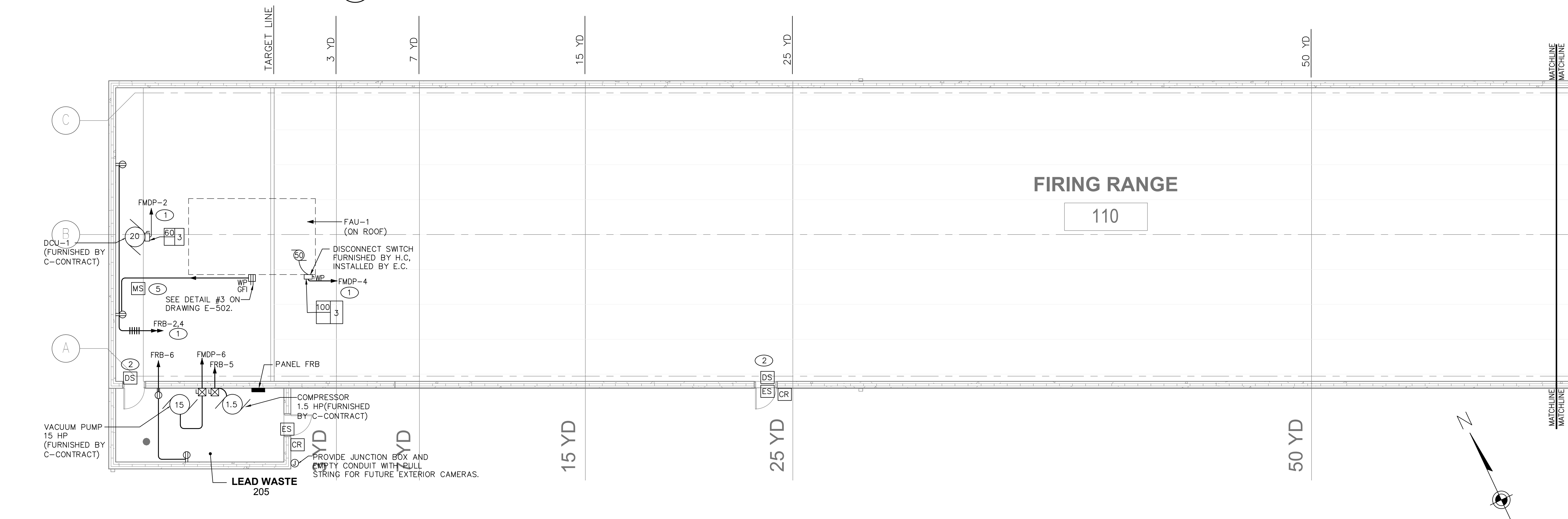
- SEE PANEL SCHEDULE FOR CONDUIT AND WIRE SIZE.
- PROVIDE 3/4" CONDUIT WITH CONDUCTORS TO CONTROLLER PANEL. SIZE CONDUCTORS PER SECURITY MANUFACTURERS RECOMMENDATION. IN ADDITION, INTERLOCK DOOR CONTACT WITH RANGE CONDITION LIGHT.
- COORDINATE CONTROL CONDUIT AND WIRING REQUIREMENTS WITH HVAC CONTRACTOR. COORDINATE EXACT LOCATION OF VFD UNIT WITH HVAC CONTRACTOR.
- FIELD VERIFY EXACT MOUNTING LOCATION OF PANEL.
- PROVIDE 3/4" CONDUIT WITH CONDUCTORS TO BMS PANEL. SIZE CONDUCTORS PER SECURITY MANUFACTURERS RECOMMENDATION.

GENERAL NOTES:

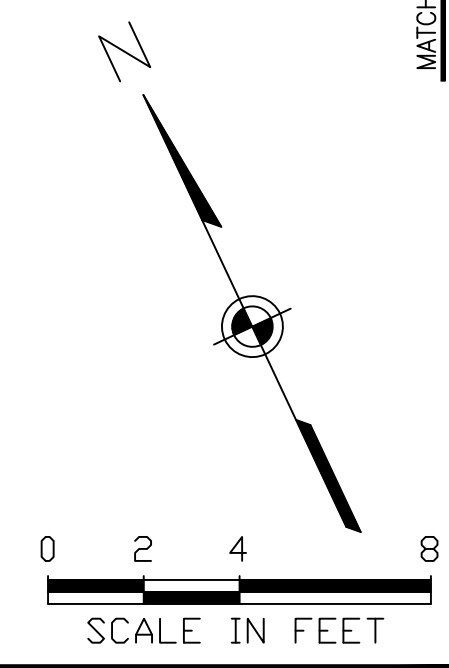
- VENTILATION SYSTEM SHALL BE INTERFACED WITH THE DOWN RANGE LIGHTING FOR OPERATION.
- ALL CONDUITS SERVING DEVICES BEYOND FIRING LINE SHOULD BE ROUTED ON THE ROOF.
- SEAL ALL PIPES, CONDUITS AND PENETRATIONS IN THE WALLS, FLOORS, CEILING OR THRU ANY SURFACE OF THE BALLISTIC ENVELOPE OF THE RANGE.
- ALL DOORS LEADING INTO A RANGE SPACE WHETHER SHOWN OR NOT SHALL HAVE A 3/4" CONDUIT RUN TO IT FROM NEAREST CONTROLS JUNCTION WITH 18/2 WIRE FOR A DOOR SWITCH.

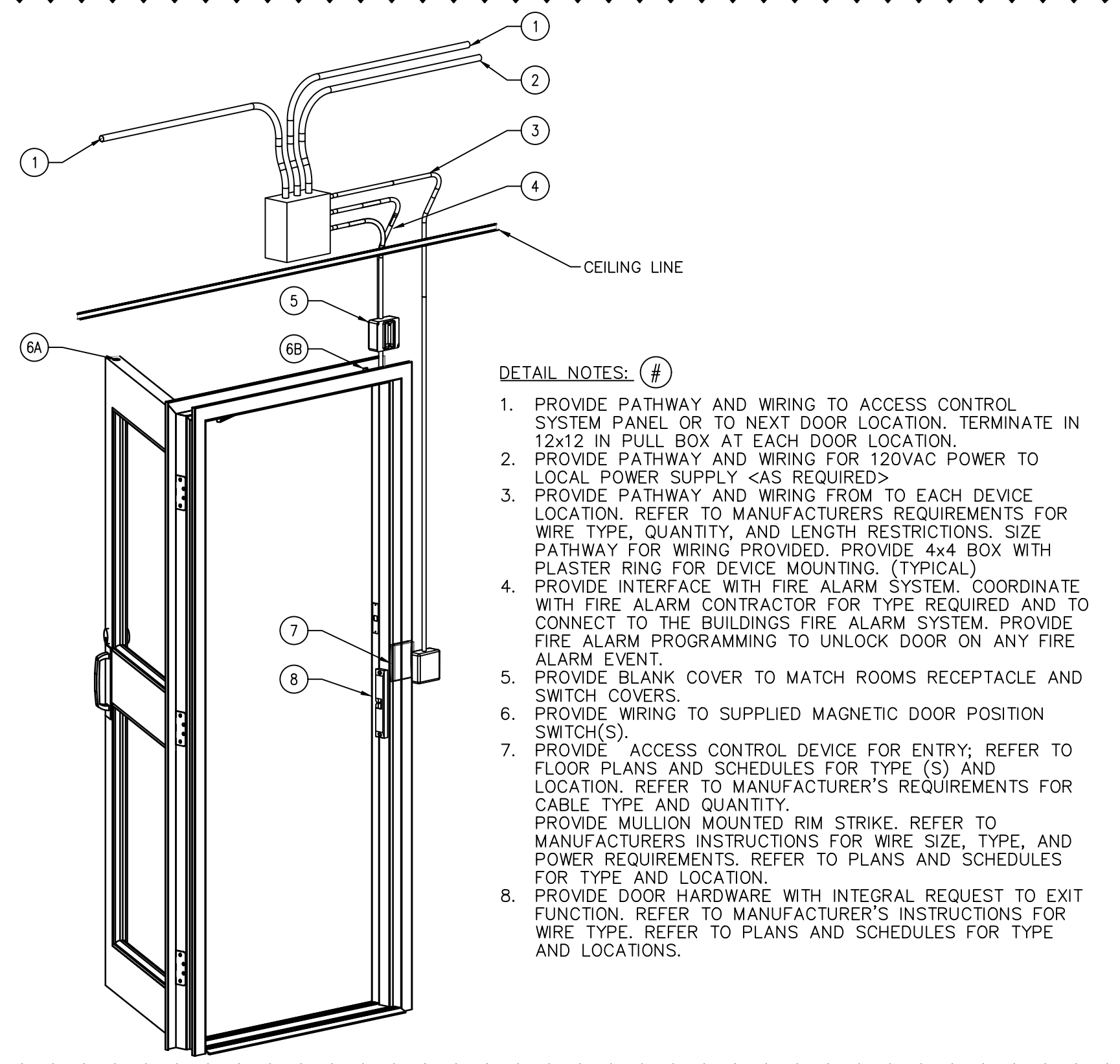


2 FIRING RANGE FLOOR PLAN - ELECTRICAL POWER
E-105 SCALE: 1/8" = 1'-0"



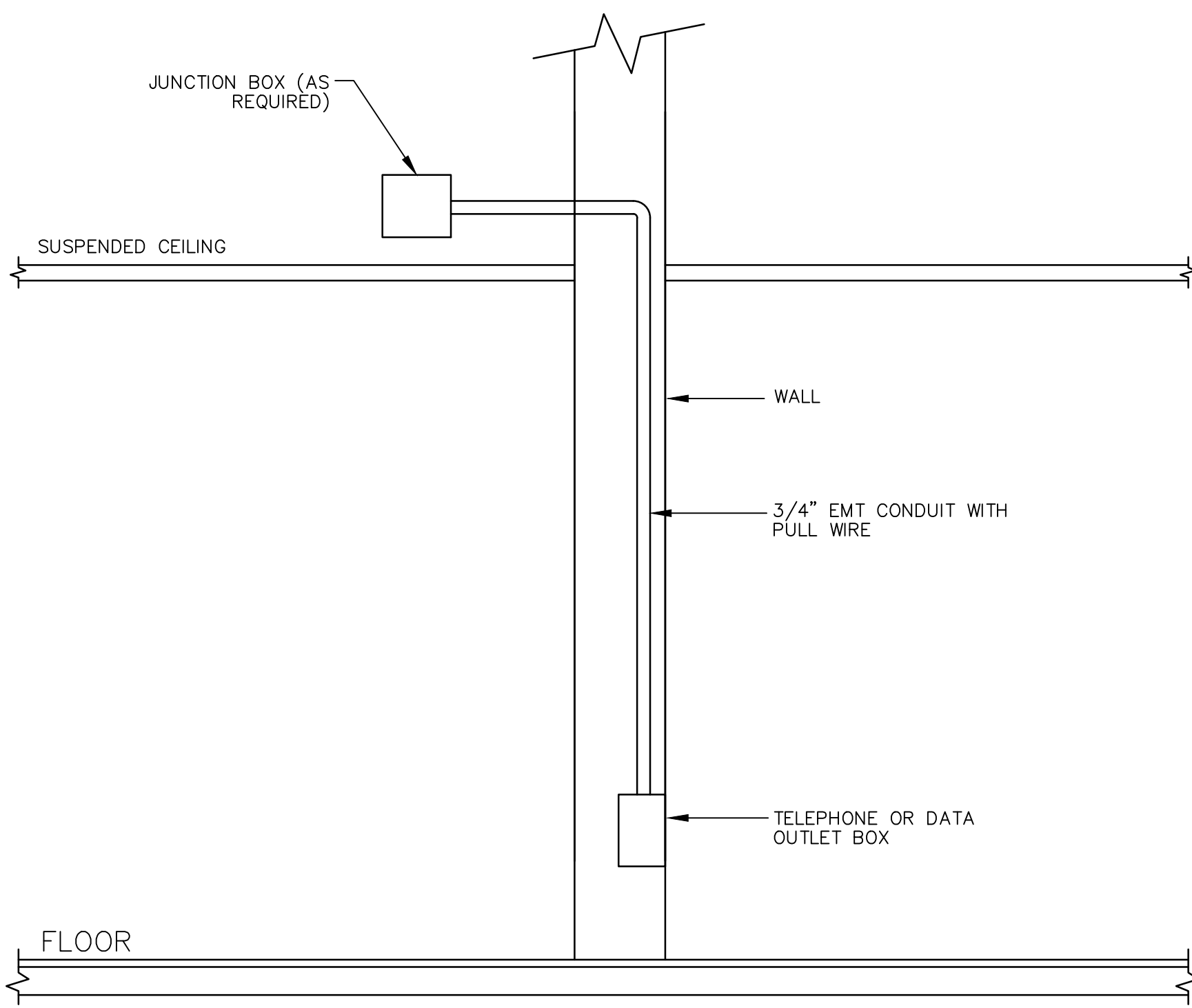
1 FIRING RANGE FLOOR PLAN - ELECTRICAL POWER
E-105 SCALE: 1/8" = 1'-0"



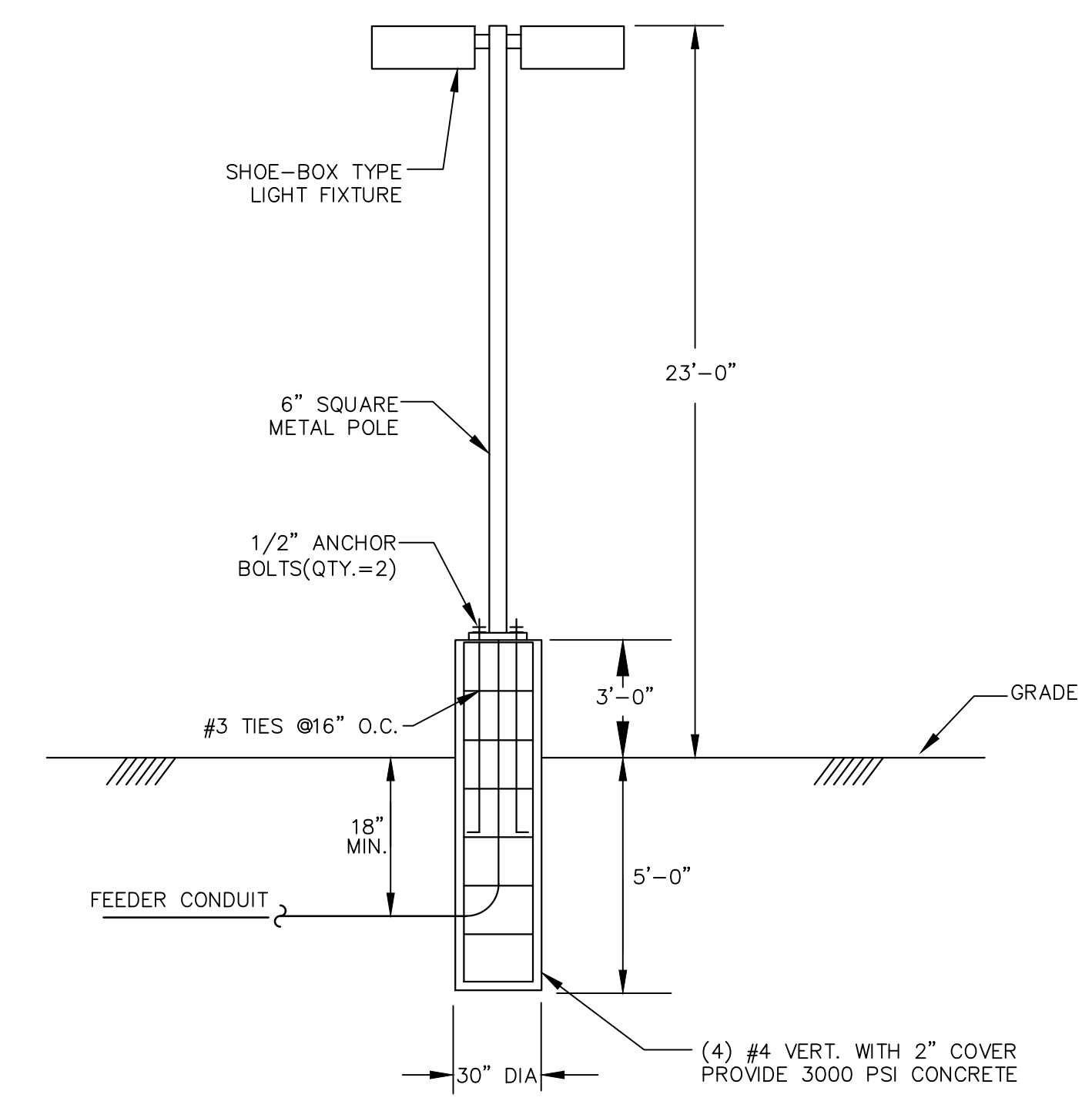


- DETAIL NOTES: #**
1. PROVIDE PATHWAY AND WIRING TO ACCESS CONTROL SYSTEM PANEL OR TO NEXT DOOR LOCATION. TERMINATE IN 12x12 IN PULL BOX AT EACH DOOR LOCATION.
 2. PROVIDE PATHWAY AND WIRING FOR 120VAC POWER TO LOCAL POWER SUPPLY <AS REQUIRED>
 3. PROVIDE PATHWAY AND WIRING FROM TO EACH DEVICE LOCATION. REFER TO MANUFACTURER'S REQUIREMENTS FOR WIRE TYPE, QUANTITY, AND LENGTH RESTRICTIONS. SIZE PATHWAY FOR WIRING PROVIDED. PROVIDE 4x4 BOX WITH PLASTER RING FOR DEVICE MOUNTING. (TYPICAL)
 4. PROVIDE INTERFACE WITH FIRE ALARM SYSTEM. COORDINATE WITH FIRE ALARM CONTRACTOR FOR TYPE REQUIRED AND TO CONNECT TO THE BUILDING'S FIRE ALARM SYSTEM. PROVIDE FIRE ALARM PROGRAMMING TO UNLOCK DOOR ON ANY FIRE ALARM EVENT.
 5. PROVIDE BLANK COVER TO MATCH ROOMS RECEPTACLE AND SWITCH COVERS.
 6. PROVIDE WIRING TO SUPPLIED MAGNETIC DOOR POSITION SWITCH(S).
 7. PROVIDE ACCESS CONTROL DEVICE FOR ENTRY; REFER TO FLOOR PLANS AND SCHEDULES FOR TYPE (S) AND LOCATION. REFER TO MANUFACTURER'S REQUIREMENTS FOR CABLE TYPE AND QUANTITY. PROVIDE MULLION MOUNTED RIM STRIKE. REFER TO MANUFACTURER'S INSTRUCTIONS FOR WIRE SIZE, TYPE, AND POWER REQUIREMENTS. REFER TO PLANS AND SCHEDULES FOR TYPE AND LOCATION.
 8. PROVIDE DOOR HARDWARE WITH INTEGRAL REQUEST TO EXIT FUNCTION. REFER TO MANUFACTURER'S INSTRUCTIONS FOR WIRE TYPE. REFER TO PLANS AND SCHEDULES FOR TYPE AND LOCATIONS.

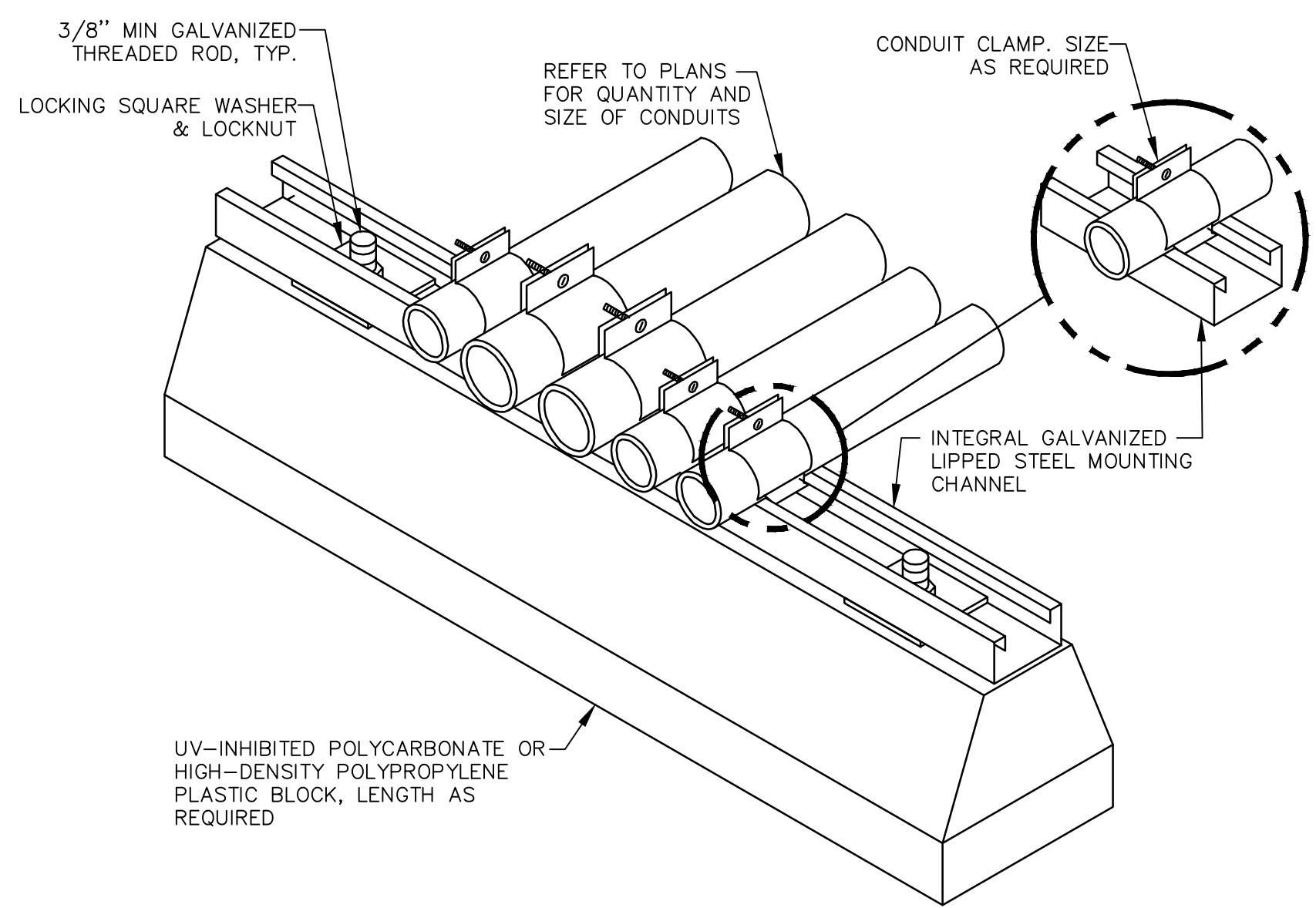
1 ACCESS CONTROL CONDUIT DETAIL FOR CARD READER SYSTEM
E-502 SCALE: NONE



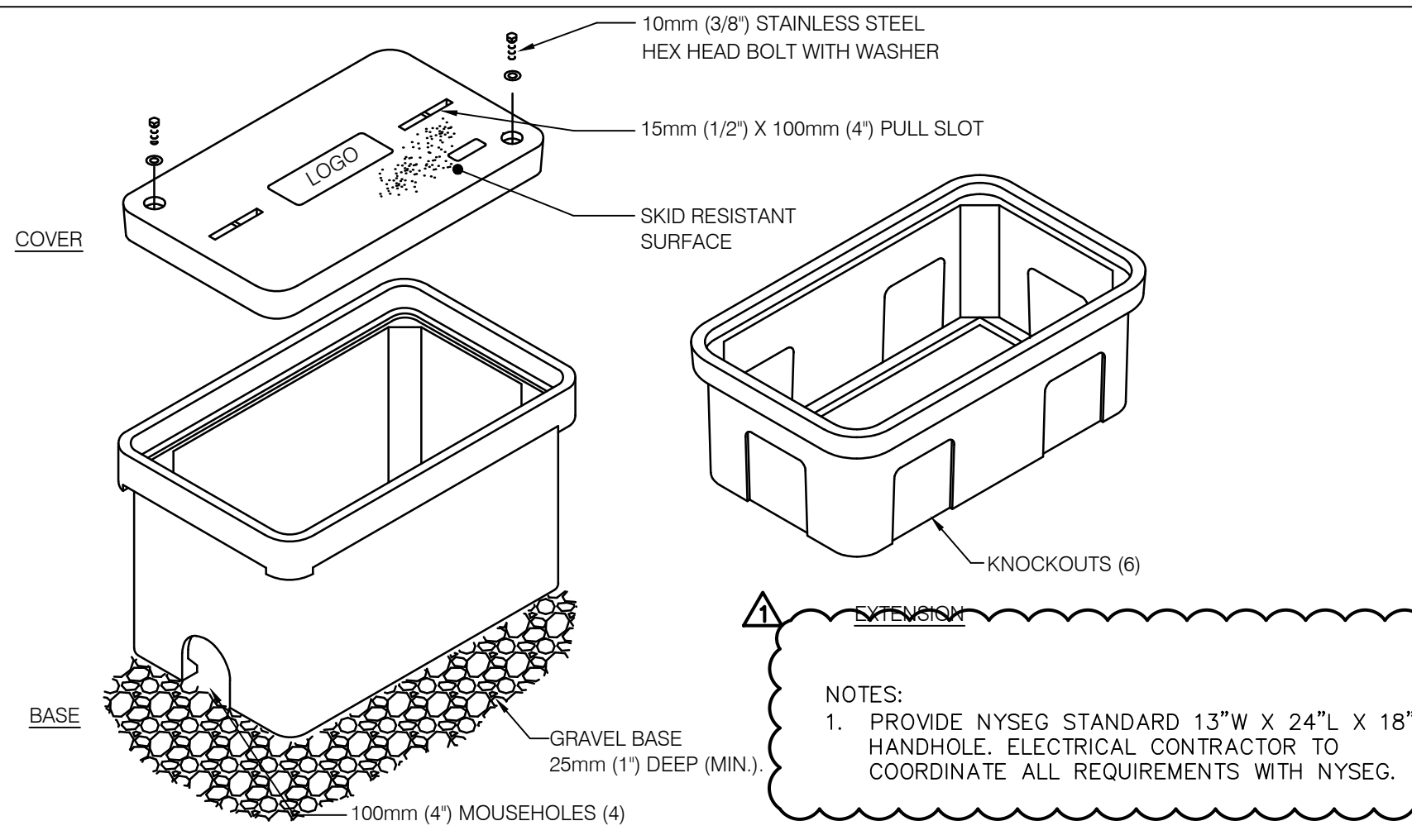
2 TYPICAL CONDUIT FOR TELEPHONE/DATA RACEWAY
E-502 SCALE: NONE



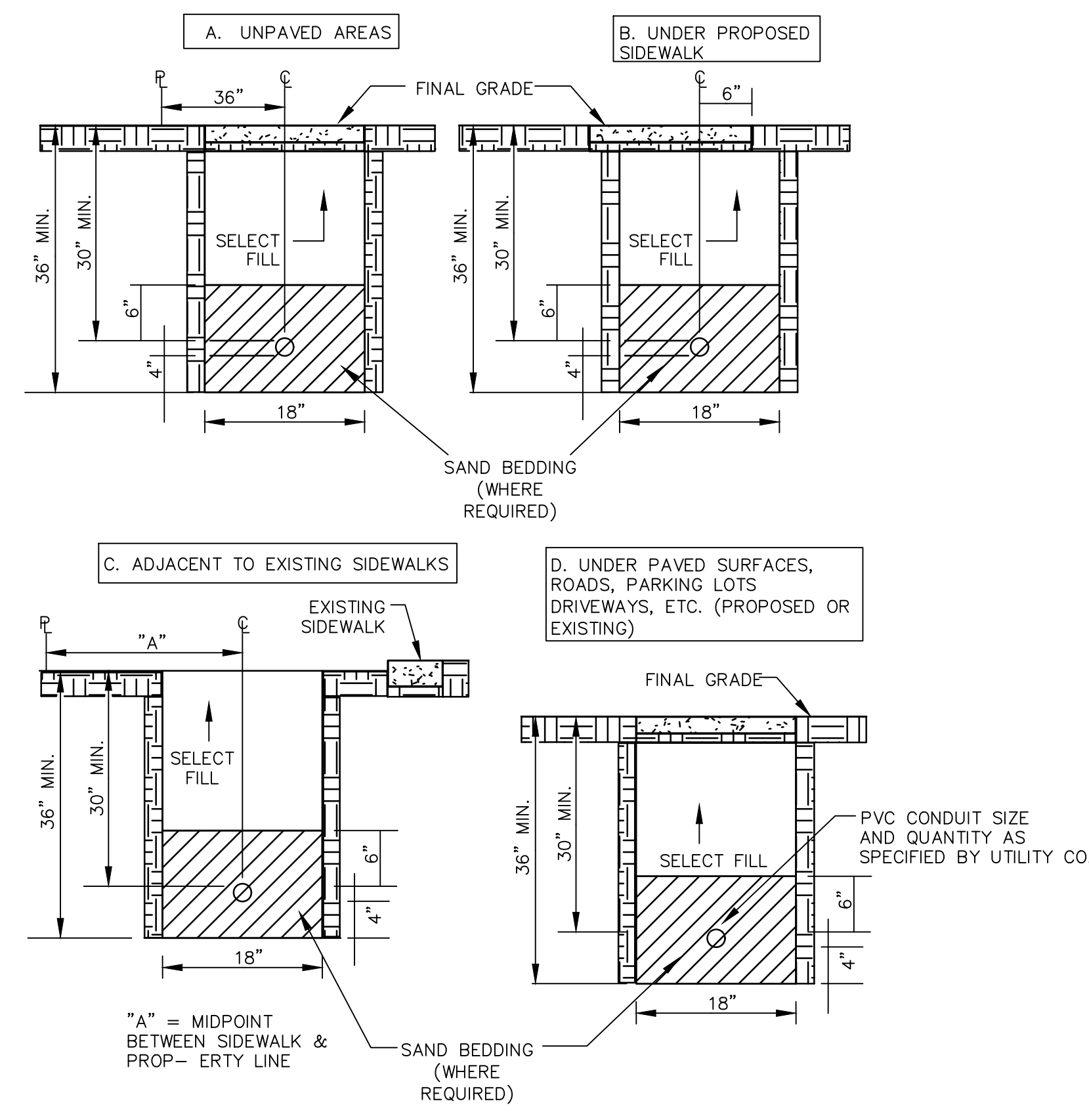
3 LIGHTING POLE INST. DETAIL-DBL SHOE BOX TYPE FIXT.
E-502 SCALE: NOT TO SCALE



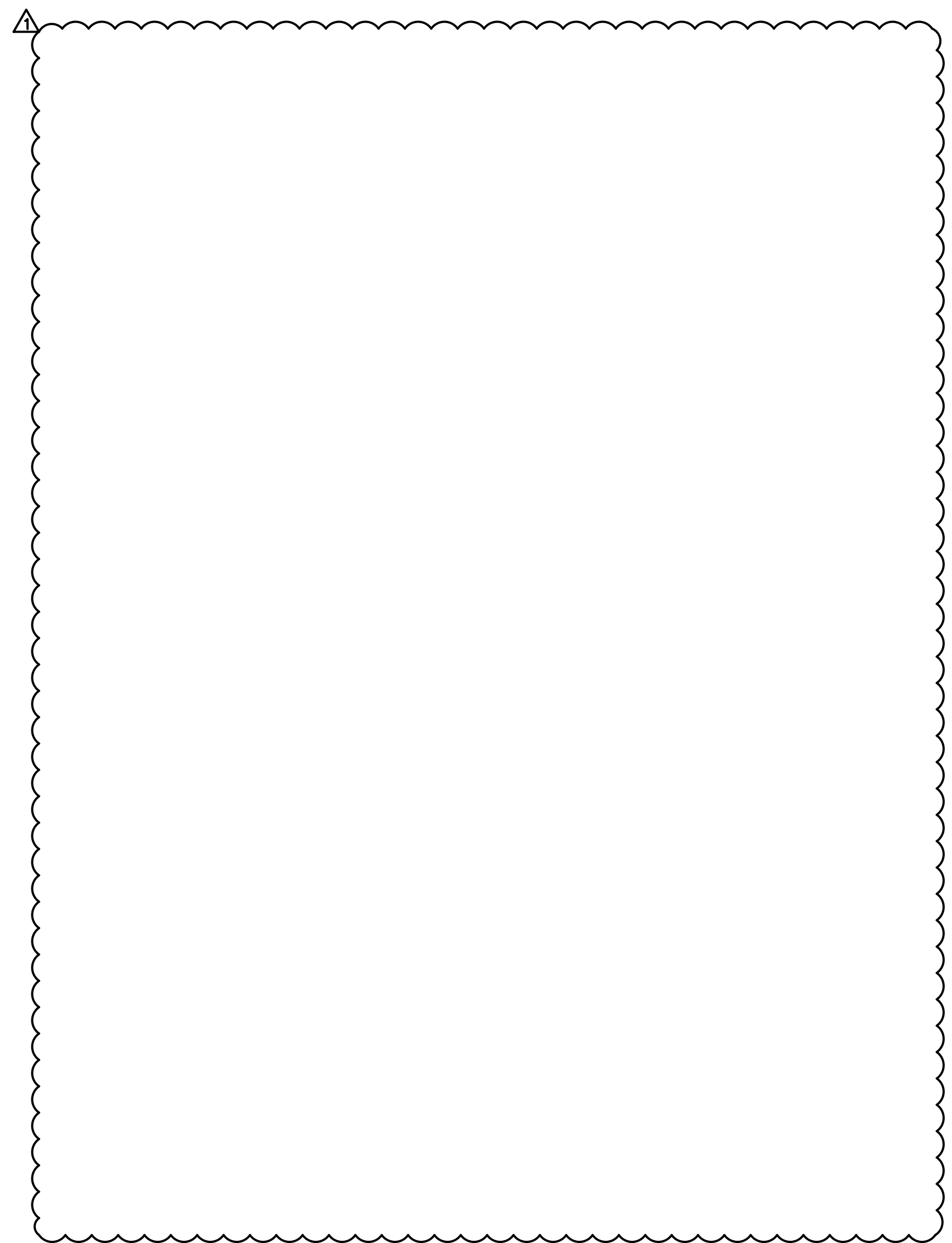
4 ROOF CONDUIT SUPPORT DETAIL
E-502 SCALE: NONE



7 HANDHOLE DETAIL
E-502 SCALE: NONE



5 INSTALLATION OF UNDERGROUND CONDUITS
E-502 SCALE: NONE



ENERGY CONSERVATION CONSTRUCTION CODE OF NEW YORK STATE:

TO THE BEST OF MY KNOWLEDGE, BELIEF AND PROFESSIONAL JUDGEMENT, THE DRAWINGS AND SPECIFICATIONS, WHICH COMPROMISE THE CONSTRUCTION DOCUMENTS FOR THIS PROJECT, ARE IN COMPLIANCE WITH THE 2016 NEW YORK ENERGY CODE.

WARNING:
THE ALTERATION OF THIS MATERIAL IN ANY WAY, UNLESS DONE UNDER THE DIRECTION OF A COMPARABLE PROFESSIONAL, I.E. ARCHITECT FOR AN ARCHITECT, ENGINEER FOR AN ENGINEER OR LANDSCAPE ARCHITECT FOR A LANDSCAPE ARCHITECT, IS A VIOLATION OF THE NEW YORK STATE EDUCATION LAW AND/OR REGULATIONS AND IS A CLASS "A" MISDEMEANOR.

CONTRACT: **ELECTRICAL**

TITLE: **PROVIDE ENCLOSED FIRING RANGE QWL SITE**

LOCATION: **AUBURN CORRECTIONAL FACILITY QWL SITE
3579 FRANKLIN STREET ROAD
SENNETT, NY**

CLIENT: **DEPARTMENT OF CORRECTIONS AND COMMUNITY SUPERVISION**

MARK	DATE	DESCRIPTION
⚠	02/13/2019	ADDENDUM #2
⚠	02/08/2019	ADDENDUM #1
	10/15/2018	FINAL SUBMISSION
	5/04/2018	100% SUBMISSION
	1/18/2018	65% SCHEMATIC

PROJECT NUMBER: **45444 - E**

DESIGNED BY: **P. BELAVUS**

DRAWN BY: **P. BELAVUS**

FIELD CHECK: **R. BLANCH**

APPROVED: **R. BLANCH**

SHEET TITLE: **ADDENDUM #2
ELECTRICAL DETAILS**

DRAWING NUMBER: **E-502**

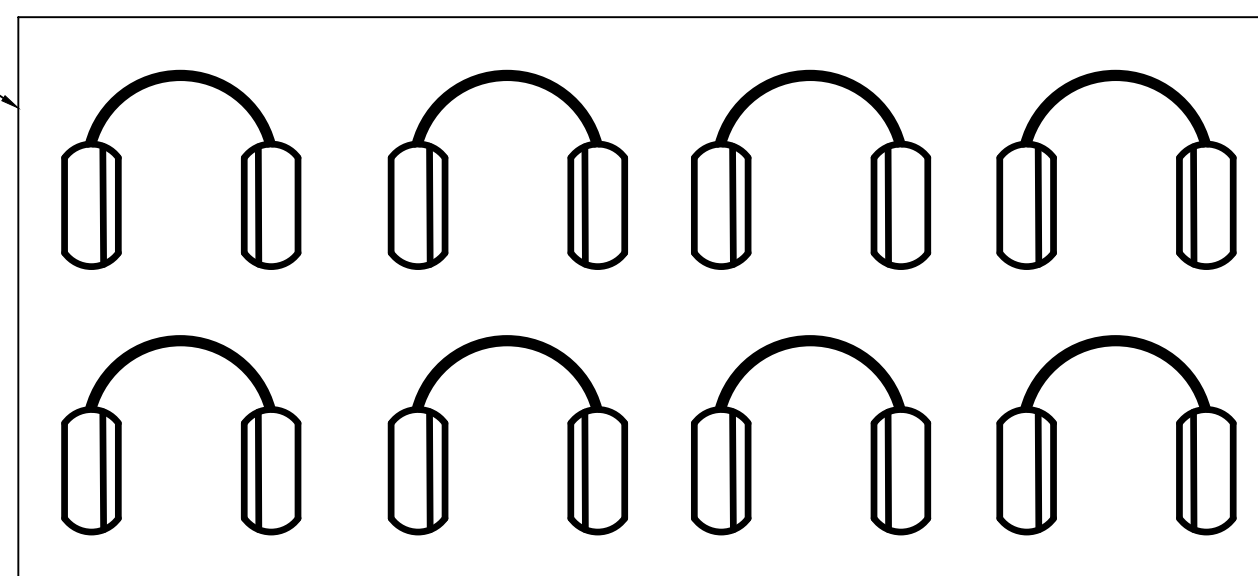
SHEET **86** OF **91**

NOTE:

RANGE SAFETY OFFICER WIRELESS COMMUNICATION:

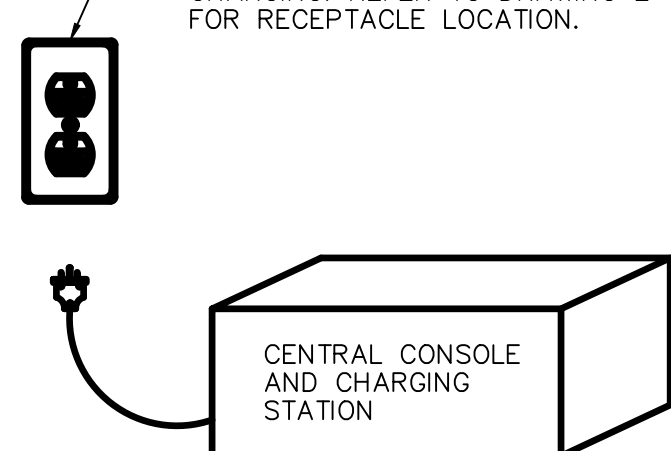
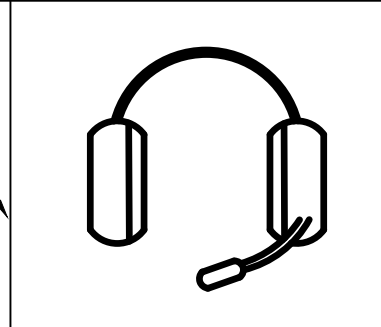
- A. THE RANGE SAFETY OFFICER (RSO) COMMUNICATION SYSTEM SHALL PROVIDE EQUIPMENT FOR THE RSO'S TO SPEAK WITH THE SHOOTERS OVER A WIRELESS SYSTEM. THE EARPIECES AND MICROPHONE FOR THE SYSTEM SHALL BE FITTED INTO A HIGH PERFORMANCE HEARING PROTECTION HEADSET. THE RESULTING HEADSET SHALL STILL BE LIGHT IN WEIGHT AND AFFORD FULL HEARING PROTECTION.

PROVIDE EIGHT (8) PELTOR MT16H21FW55U-584 WS (OR EQUAL) WIRELESS HIGH NOISE COMMUNICATION HEADSETS FOR SHOOTERS. HEADSETS TO BE STORED IN STORAGE ROOM WHEN NOT IN USE.



RECEPTACLE FOR PA & COMMUNICATION SYSTEMS BATTERY CHARGING. REFER TO DRAWING E-105 FOR RECEPTACLE LOCATION.

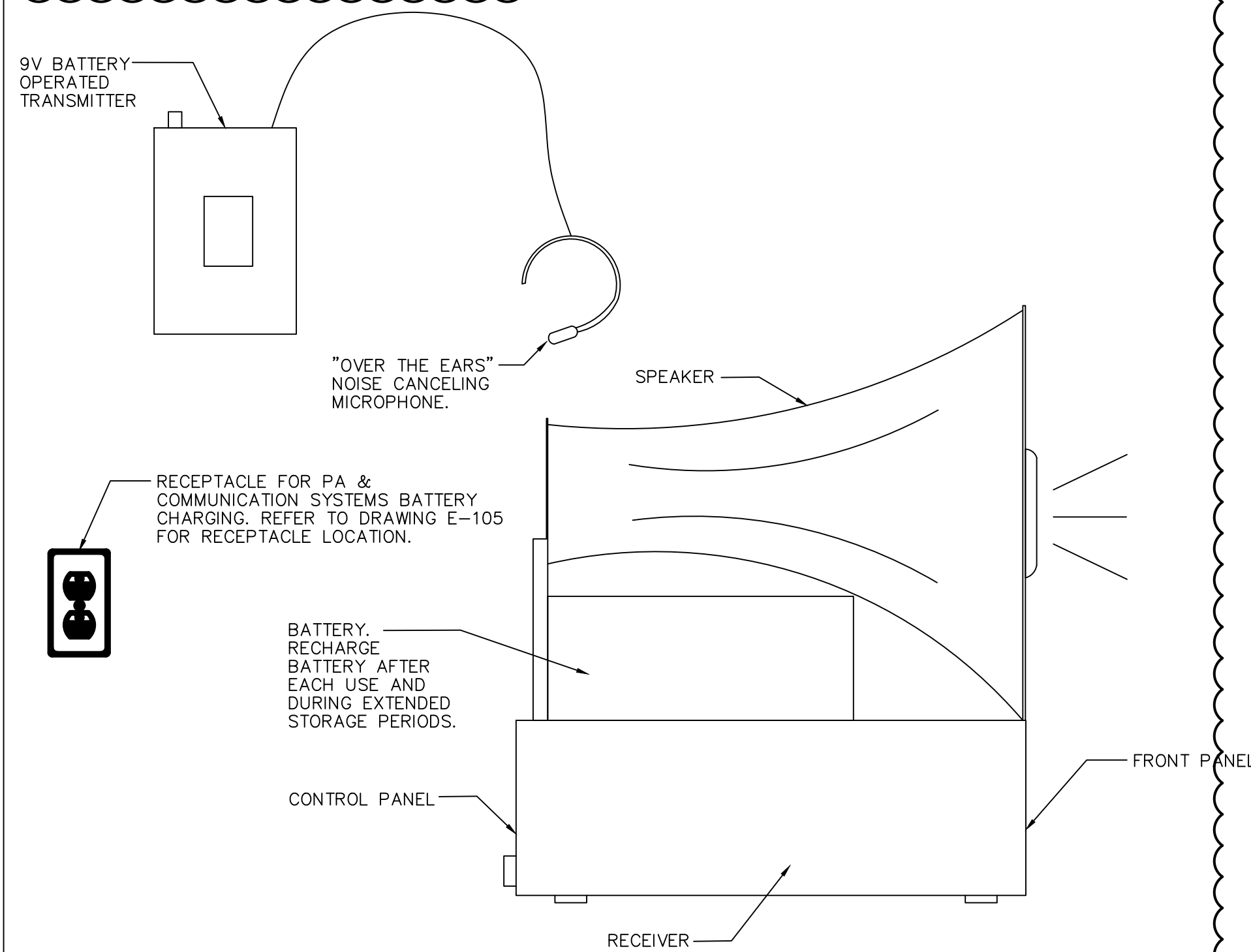
PROVIDE ONE(1) PELTOR LITE COM PLUS M17H7A4612-NA-CA (OR EQUAL) 2-WAY RADIO WIRELESS HIGH NOISE COMMUNICATION HEADSET FOR THE RANGE SAFETY OFFICER. HEADSET TO BE STORED IN STORAGE ROOM WHEN NOT IN USE.



1 COMMUNICATION SYSTEM DETAIL
E-503 SCALE: NONE

NOTE:

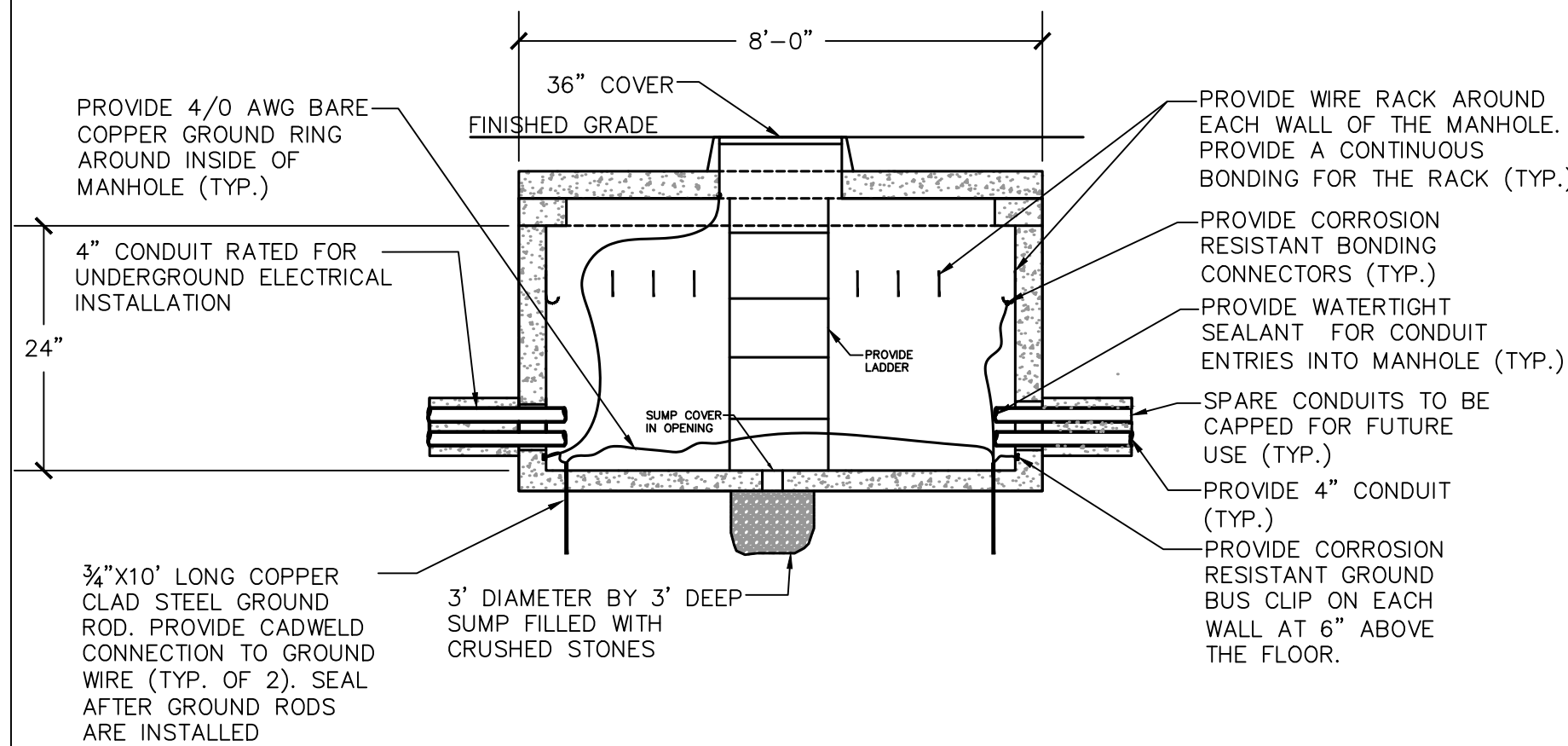
1. PROVIDE PORTABLE PA SYSTEM ELECTRONICS "LONG RANGER 4" RIO RANCHO NM. OR EQUIVALENT.



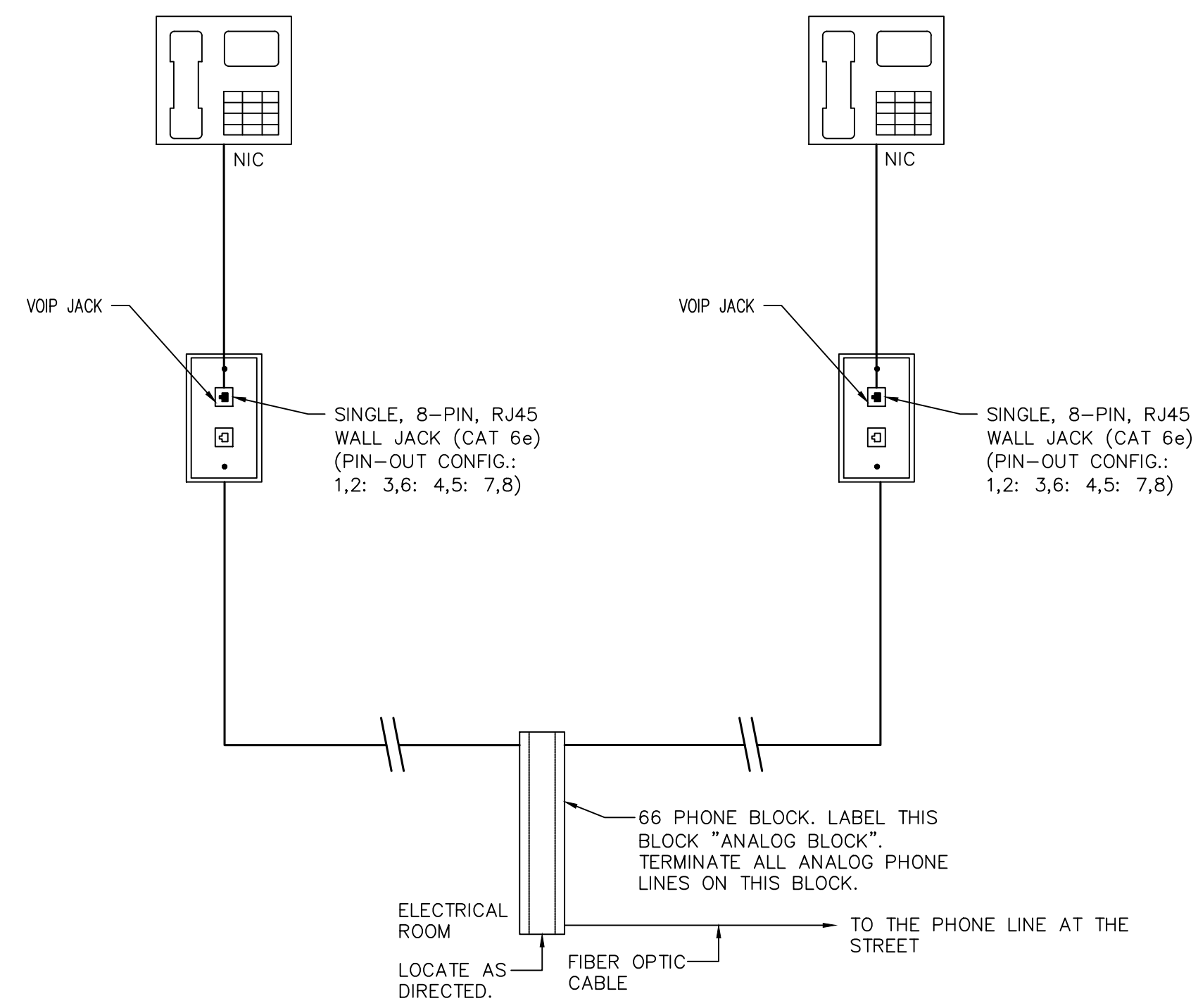
2 PORTABLE PA SYSTEM DETAIL
E-503 SCALE: NONE

NOTES:

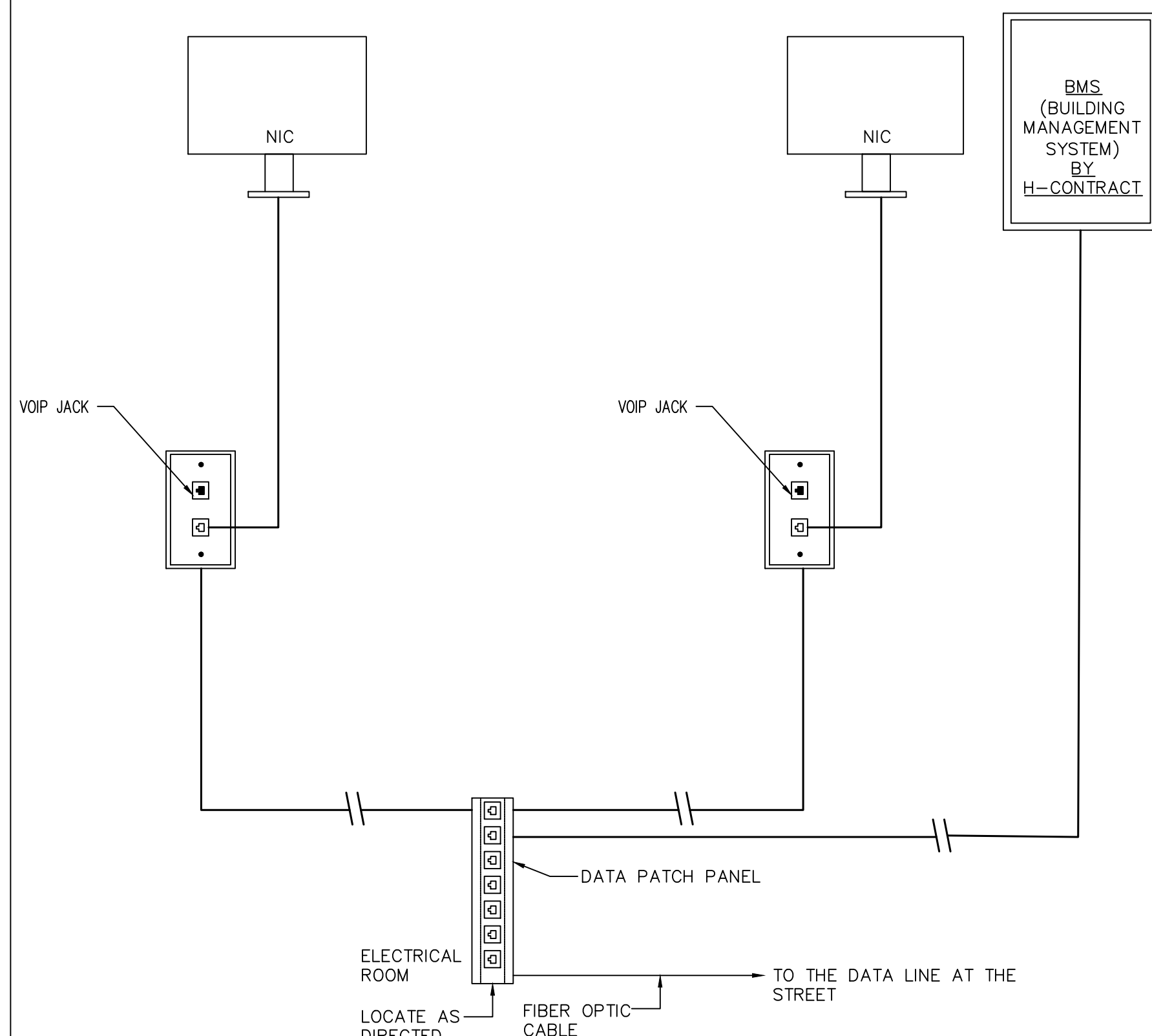
1. PROVIDE NYSEG STANDARD 8'X8' MANHOLE. ELECTRICAL CONTRACTOR TO COORDINATE WITH NYSEG REPRESENTATIVE FOR FINAL SELECTION OF MANHOLE.
2. MANHOLE SHALL BE INSTALLED PER NYSEG REQUIREMENTS. CONTRACTOR TO COORDINATE IN-FIELD WITH NYSEG REPRESENTATIVE THE CONSTRUCTION AND INSTALLATION OF THE ELECTRICAL MANHOLES.
3. THE MANHOLE SHALL HAVE A HEAVY DUTY CAST IRON RING AND COVER DESIGNED TO WITHSTAND AN H-20 LOADING.
4. MANHOLE SHALL HAVE A 3' DIAMETER BY 3' DEEP SUMP FILLED WITH CRUSHED STONES.
5. THE CONDUITS SLOPE AT LEAST 2" PER 100 FT TOWARDS THE MANHOLE FOR DRAINAGE.
6. CONTRACTOR TO INSTALL A PULL WIRE IN EACH CONDUIT.
7. ALL SPARE CONDUITS SHALL BE CAPPED AND SEALED UNTIL NEEDED.
8. PROVIDE A PERMANENT LADDER TO ACCESS THE MANHOLE.
9. ALL HANDHOLES SHALL BE SUBMITTED TO THE ENGINEER FOR REVIEW.
10. ALL CONCRETE ENCASEMENT SHALL BE 4,000 PSI AT 28 DAYS.



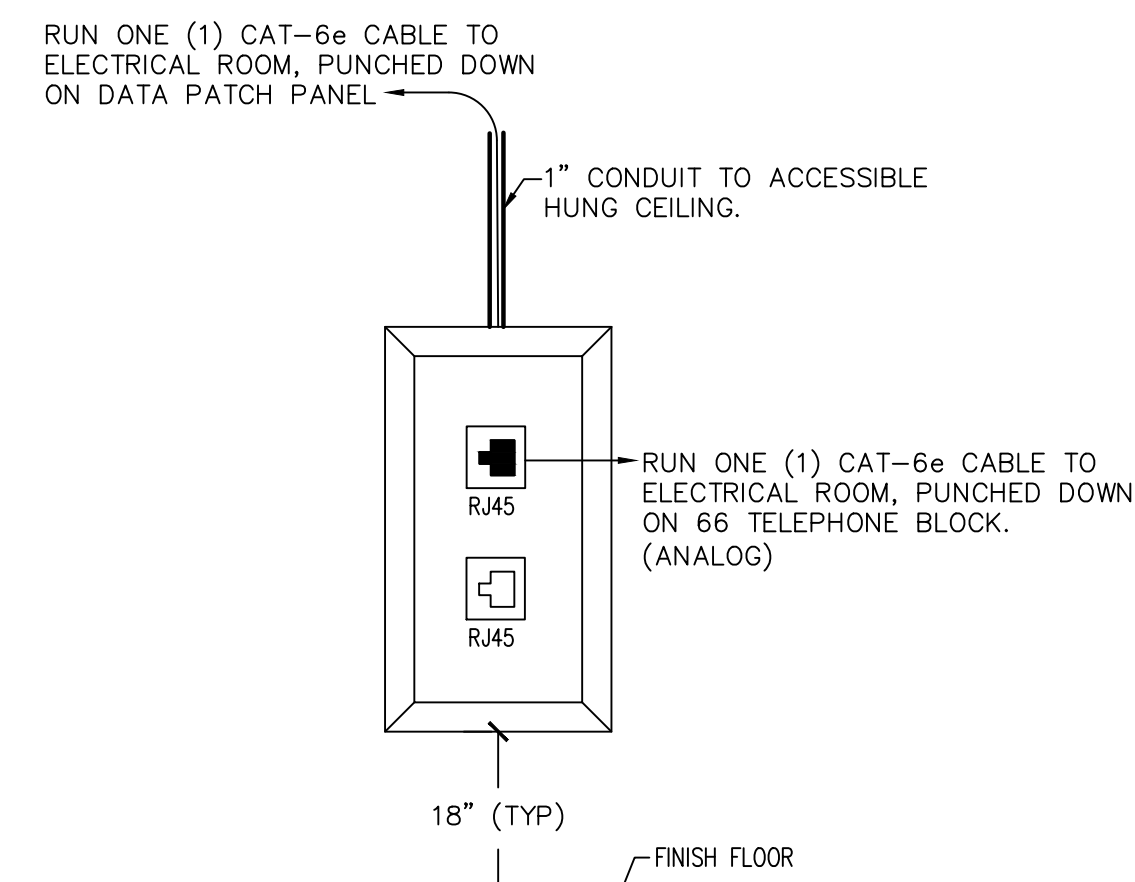
3 MANHOLE DETAIL
E-503 SCALE: NONE



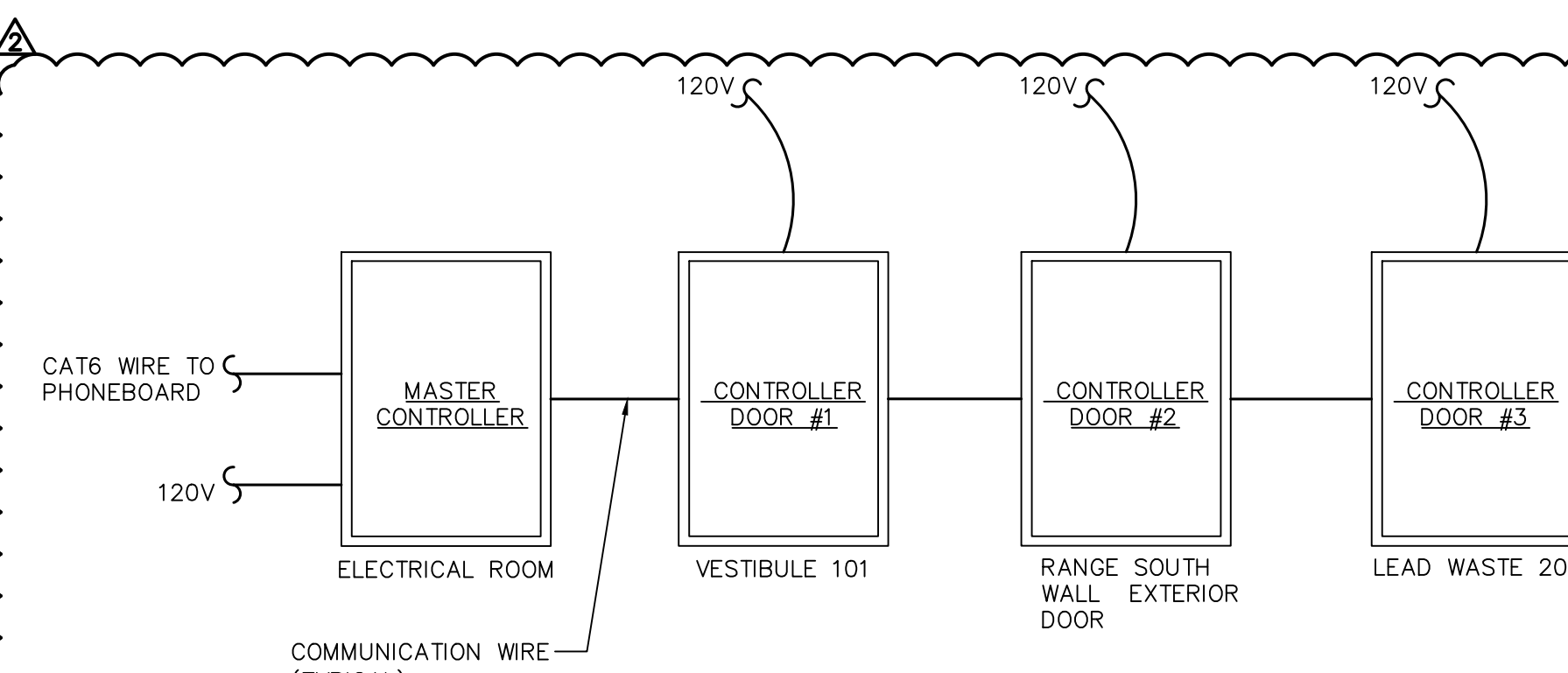
4 PHONE SINGLE LINE DIAGRAM
E-503 SCALE: NONE



5 DATA SINGLE LINE DIAGRAM
E-503 SCALE: NONE



6 TYPICAL DATA/PHONE OUTLET
E-503 SCALE: NONE



NOTES:

1. REFER TO DETAIL 1/E-502 FOR ADDITIONAL REQUIREMENTS.
2. PROVIDE ALL CONTROLLERS, DEVICES, WIRING PROGRAMMING FOR A COMPLETE AND OPERATIONAL SYSTEM.
3. PROVIDE CONTROLLERS SUFFICIENT TO INCLUDE ALL POINTS INDICATED ON FLOOR PLANS AND DETAILS, ALONG WITH 20% SPARE POINTS.
4. PROVIDE 100 CARDS AND REQUIRED PROGRAMMING WITH SYSTEM.
5. PROVIDE ONE YEAR OF MAINTENANCE INCLUDED WITH SYSTEM INCLUDE THREE INDEPENDENT CALLS FOR MODIFICATIONS OF PROGRAMMING.

7 SECURITY SINGLE LINE DIAGRAM
E-503 SCALE: NONE

CONSULTANT



ENERGY CONSERVATION CONSTRUCTION CODE OF NEW YORK STATE:

TO THE BEST OF MY KNOWLEDGE, BELIEF AND PROFESSIONAL JUDGEMENT, THE DRAWINGS AND SPECIFICATIONS, WHICH COMPROMISE THE CONSTRUCTION DOCUMENTS FOR THIS PROJECT, ARE IN COMPLIANCE WITH THE 2016 NEW YORK ENERGY CODE.

WARNING:

THE ALTERATION OF THIS MATERIAL IN ANY WAY, UNLESS DONE UNDER THE DIRECTION OF A COMPARABLE PROFESSIONAL, I.E. ARCHITECT FOR AN ARCHITECT, ENGINEER FOR AN ENGINEER OR LANDSCAPE ARCHITECT FOR A LANDSCAPE ARCHITECT, IS A VIOLATION OF THE NEW YORK STATE EDUCATION LAW AND/OR REGULATIONS AND IS A CLASS "A" MISDEMEANOR.

ELECTRICAL

TITLE: PROVIDE ENCLOSED FIRING RANGE QWL SITE

LOCATION: AUBURN CORRECTIONAL FACILITY QWL SITE 3579 FRANKLIN STREET ROAD SENNETT, NY

CLIENT: DEPARTMENT OF CORRECTIONS AND COMMUNITY SUPERVISION

MARK	DATE	DESCRIPTION
⚠	02/13/2019	ADDENDUM #2
⚠	02/08/2019	ADDENDUM #1
	10/15/2018	FINAL SUBMISSION
	5/04/2018	100% SUBMISSION
	1/18/2018	65% SCHEMATIC
PROJECT NUMBER:	45444 - E	
DESIGNED BY:	P. BELAVUS	
DRAWN BY:	P. BELAVUS	
FIELD CHECK:		
APPROVED:	R. BLANCH	

ADDENDUM #2 ELECTRICAL DETAILS

DRAWING NUMBER: E-503

LOCATION	NORTHING	EASTING
102.1	1076620.2103	840956.8068
102.2	1076615.2193	840982.4123
102.3	1076566.3264	841294.2310
102.4	1076642.5089	841308.0576
102.5	1076647.6905	841281.4745
102.6	1076675.3471	840967.5541
102.7	1076585.8817	841007.4893
102.8	1076559.4097	841170.1271
102.9	1076565.7284	841198.3030
102.10	1076601.9618	841412.4026
102.11	1076627.7063	841356.5693
102.12	1076676.3108	841301.1840
102.13	1076656.3865	841244.1623
102.14	1076706.1139	840989.0441
102.15	1076722.6584	841008.4814
102.16	1076677.1597	841241.9049
102.17	1076784.4368	841000.2368
102.18	1076715.8850	841282.8389
102.19	1076552.1244	841285.2044
102.20	1076609.1565	840991.4180
102.21	1076536.6867	841389.9933
102.22	1076548.3253	841330.2952

NOTES:

1. PAINT ASPHALT SURFACES WITH LINES AND ARROWS SHOWN IN ACCORDANCE WITH SPECIFICATION SECTION 321723. STRIPING PLAN ON DRAWING C-505.
2. PROVIDE 8'-2" BY 12'-2" REINFORCED CONCRETE PAD FOR STORAGE SHED, REINFORCED CONCRETE PAD AND TRANSFORMER SEPARATELY PROVIDED BY ELECTRICAL CONTRACTOR. PAD THICKNESSES ARE 6-INCHES.
3. LIGHTING POLES AS SHOWN ON DRAWING ARE N.I.C. COORDINATE WITH E-CONTRACT.
4. THE SIDEWALK TO BUILDING FOUNDATION INTERFACE AT ENTRANCEWAY DETAIL IS SHOWN ON DETAIL S1 ON A-600.

ENERGY CONSERVATION CONSTRUCTION CODE OF NEW YORK STATE:

TO THE BEST OF MY KNOWLEDGE, BELIEF AND PROFESSIONAL JUDGEMENT, THE DRAWINGS AND SPECIFICATIONS, WHICH COMPRISE THE CONSTRUCTION DOCUMENTS FOR THIS PROJECT, ARE IN COMPLIANCE WITH THE 2016 NEW YORK ENERGY CODE.

WARNING:

THE ALTERATION OF THIS MATERIAL IN ANY WAY, UNLESS DONE UNDER THE DIRECTION OF A COMPARABLE PROFESSIONAL, I.E. ARCHITECT FOR AN ARCHITECT, ENGINEER FOR AN ENGINEER OR LANDSCAPE ARCHITECT FOR A LANDSCAPE ARCHITECT, IS A VIOLATION OF THE NEW YORK STATE EDUCATION LAW AND/OR REGULATIONS AND IS A CLASS 'A' MISDEMEANOR.

CONSTRUCTION

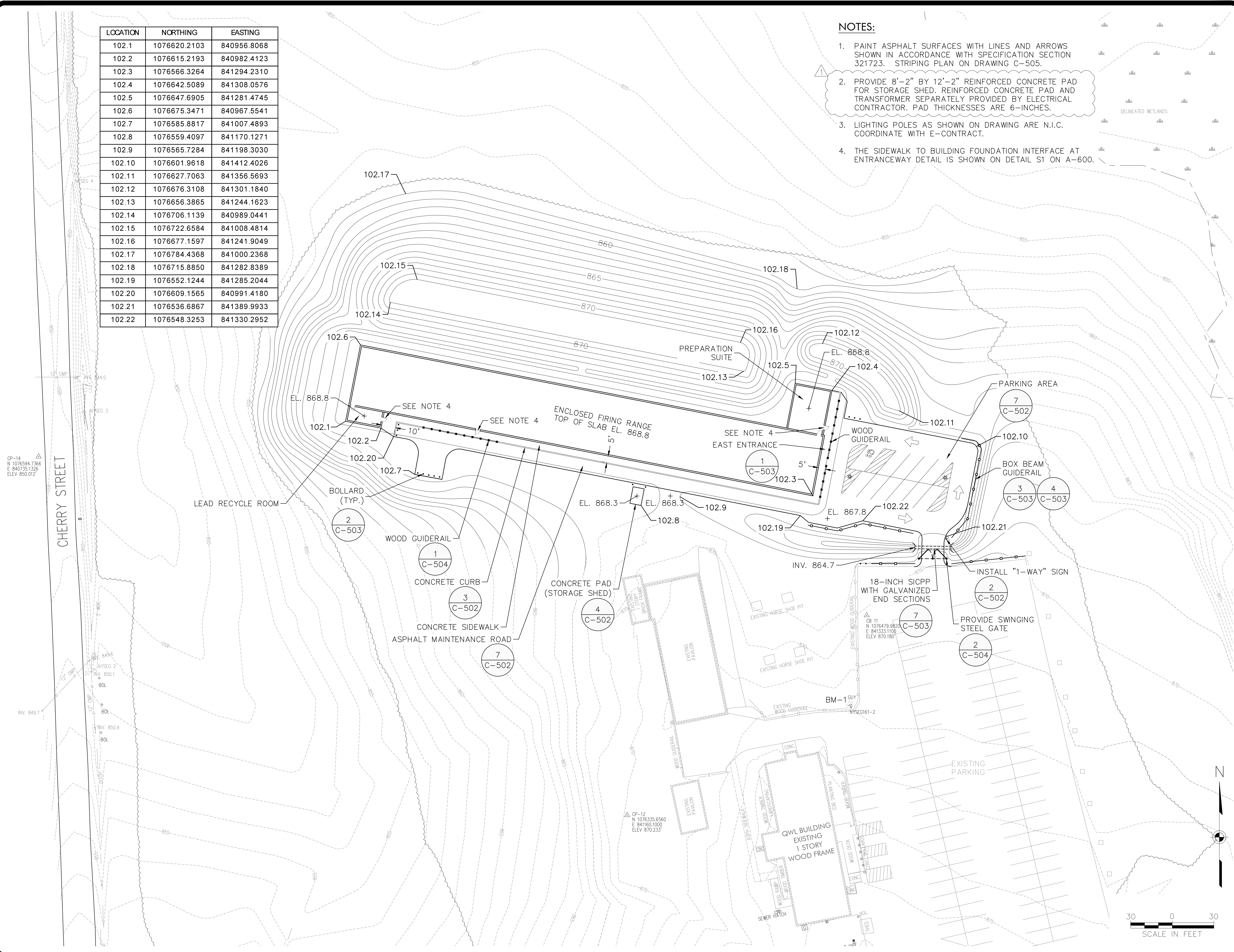
TITLE: PROVIDE ENCLOSED FIRING RANGE QWL SITE

LOCATION: AUBURN CORRECTIONAL FACILITY QWL SITE
 3579 FRANKLIN STREET ROAD
 SENNETT, NY

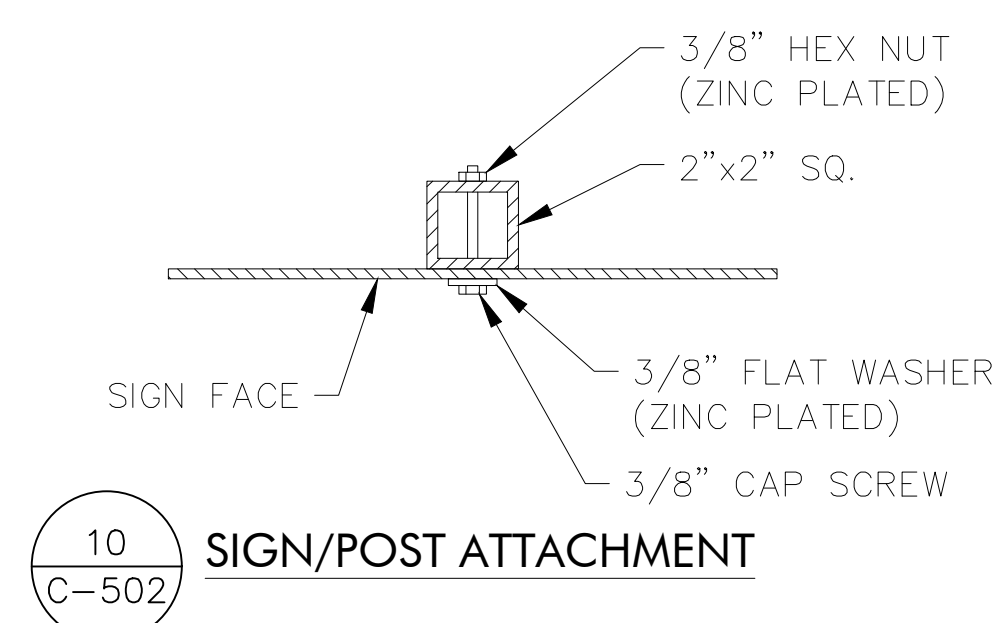
CLIENT: DEPARTMENT OF CORRECTIONS AND COMMUNITY SUPERVISION

MARK	DATE	DESCRIPTION
△	02/14/2019	ADDENDUM #2
	10/15/2018	FINAL SUBMISSION
	5/4/2018	100% SUBMISSION
	1/18/2018	65% SCHEMATIC

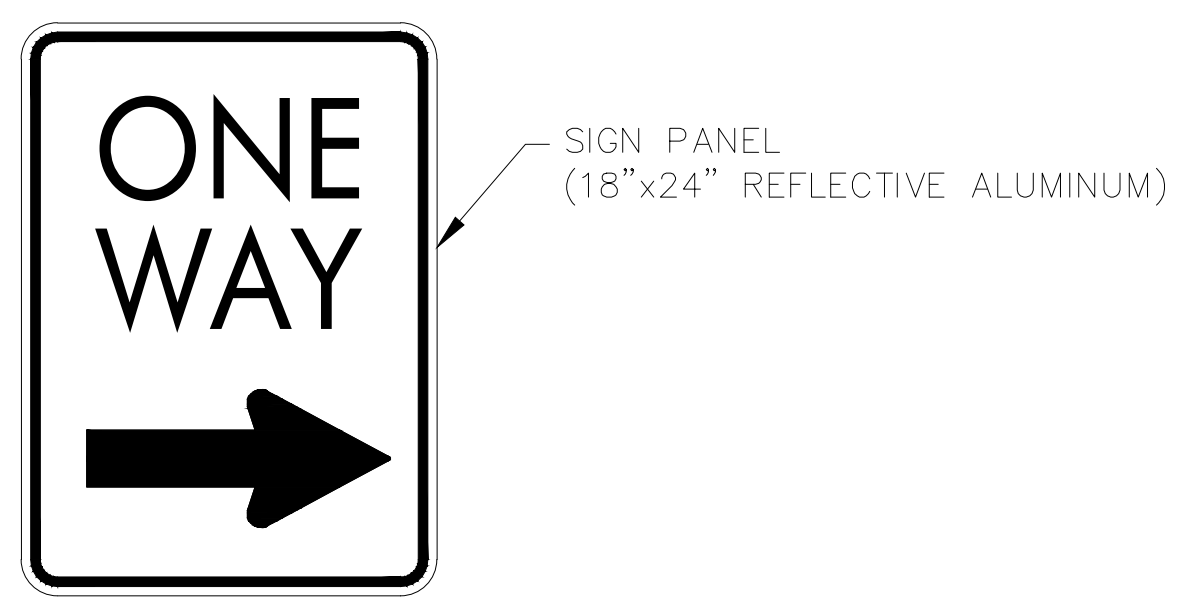
PROJECT NUMBER: 45444 - C
 DESIGNED BY: M. DIPASQUALE/B. PRZYBYL/J. KOHLER
 DRAWN BY: A. KELLY
 FIELD CHECK:
 APPROVED:
 SHEET TITLE: SITE LAYOUT PLAN



Feb 14, 2019 - 2:06pm
 J:\16-310-0295 - OGS Statewide Range Design\TO_003 - Auburn\CAD\FINAL SUBMISSION\C-102.dwg
 36x24 PLOT SHEET

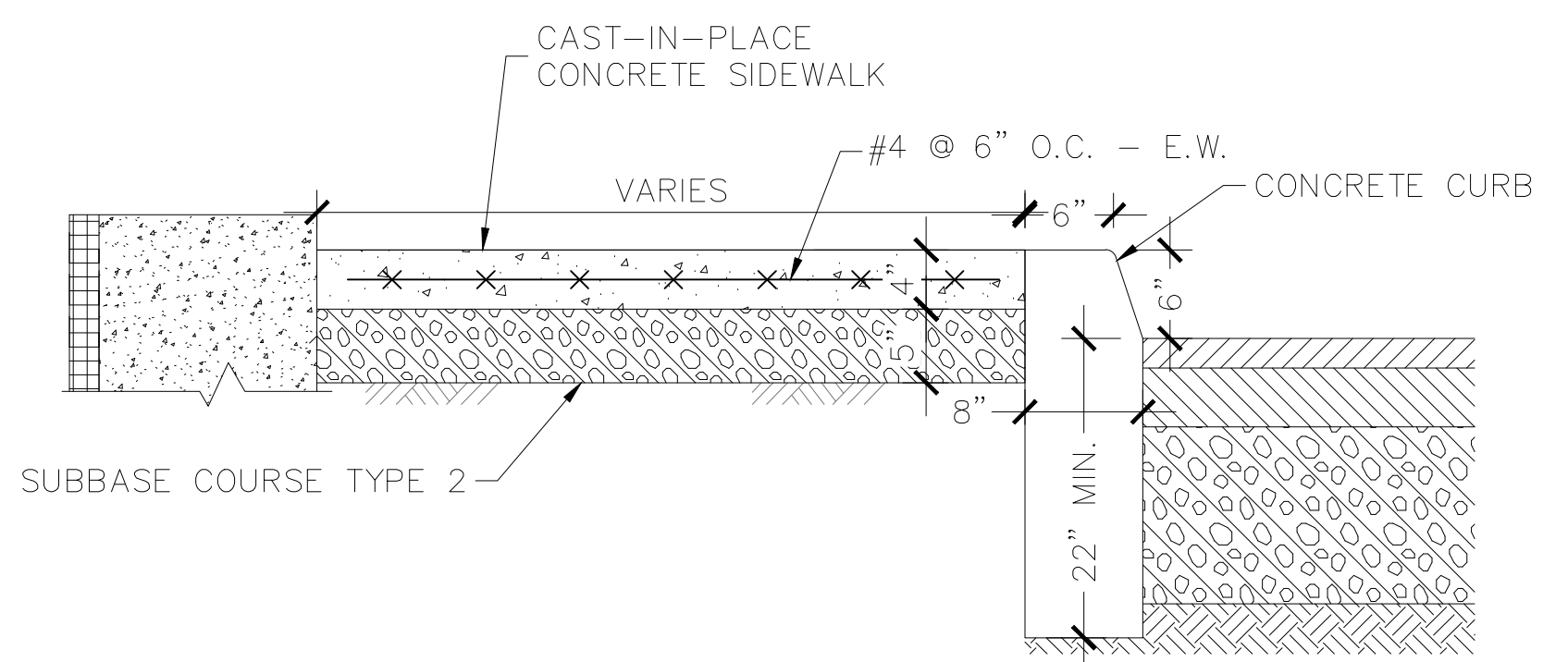


10 C-502 SIGN/POST ATTACHMENT

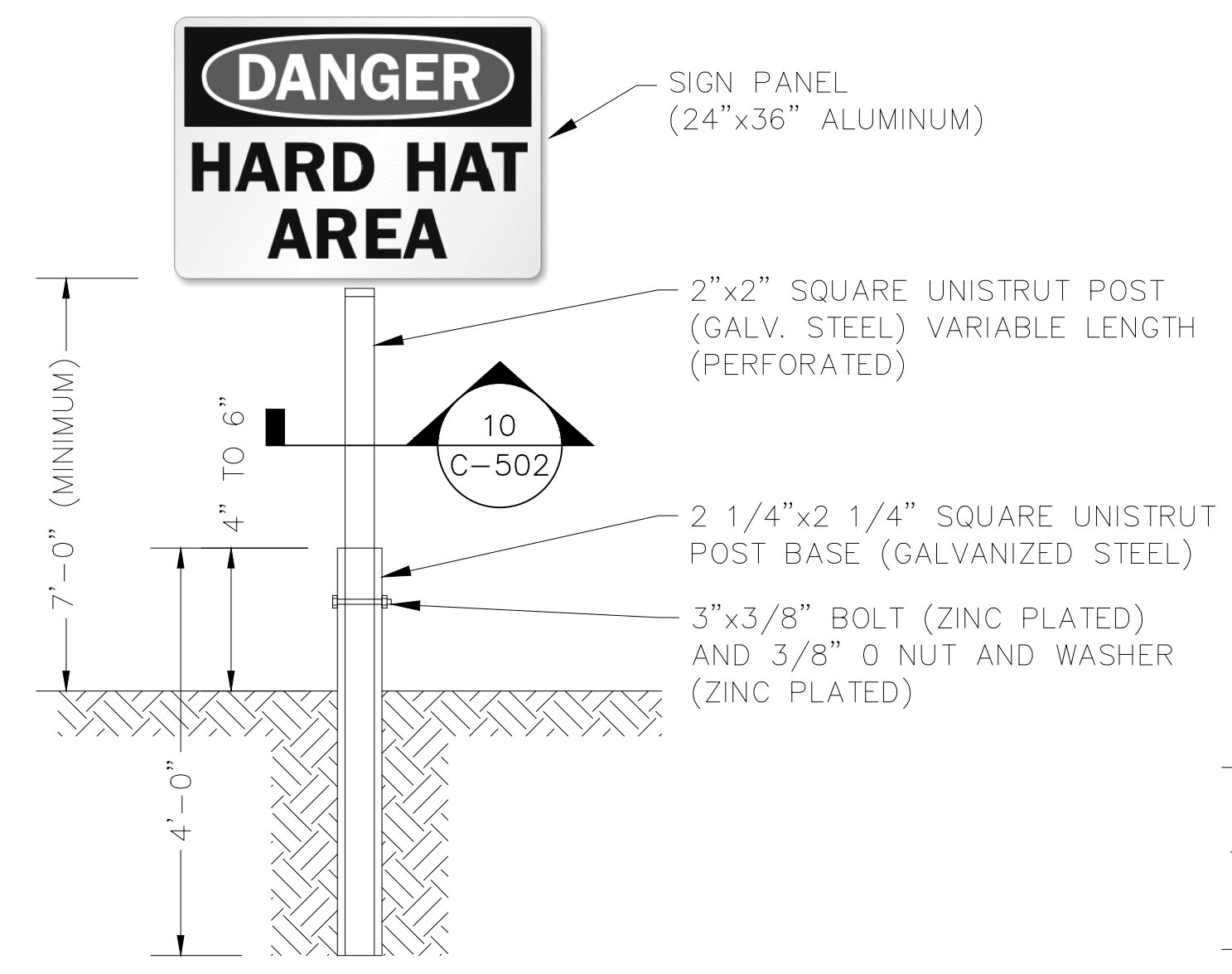
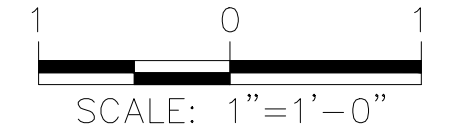


2 C-502 ONE WAY SIGN DETAIL - NTS

NOTE:
 1. MOUNT SIGN AS SHOWN FOR HARD HAT AREA SIGN DETAIL.
 2. LOCATION SHOWN ON DRAWING C-102

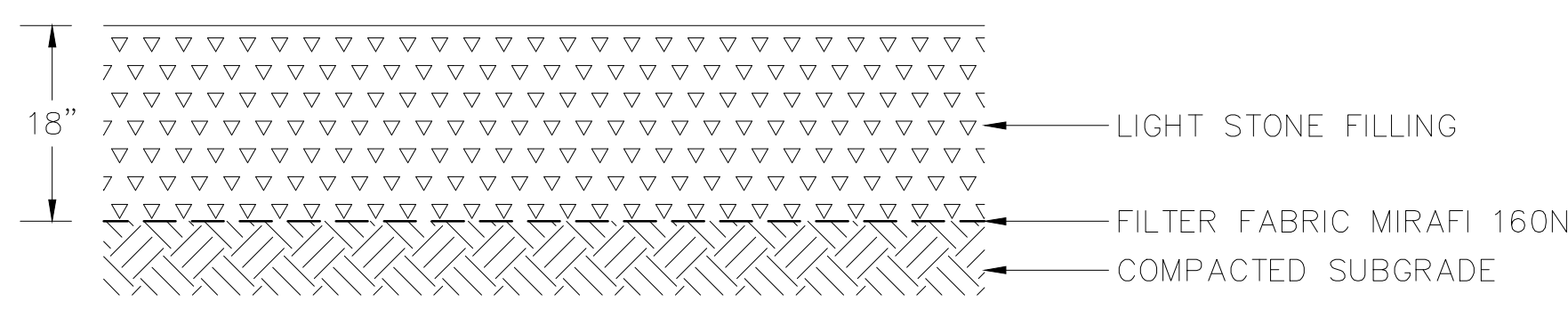


3 C-502 TYPICAL CONCRETE SIDEWALK AND CURB CROSS SECTION

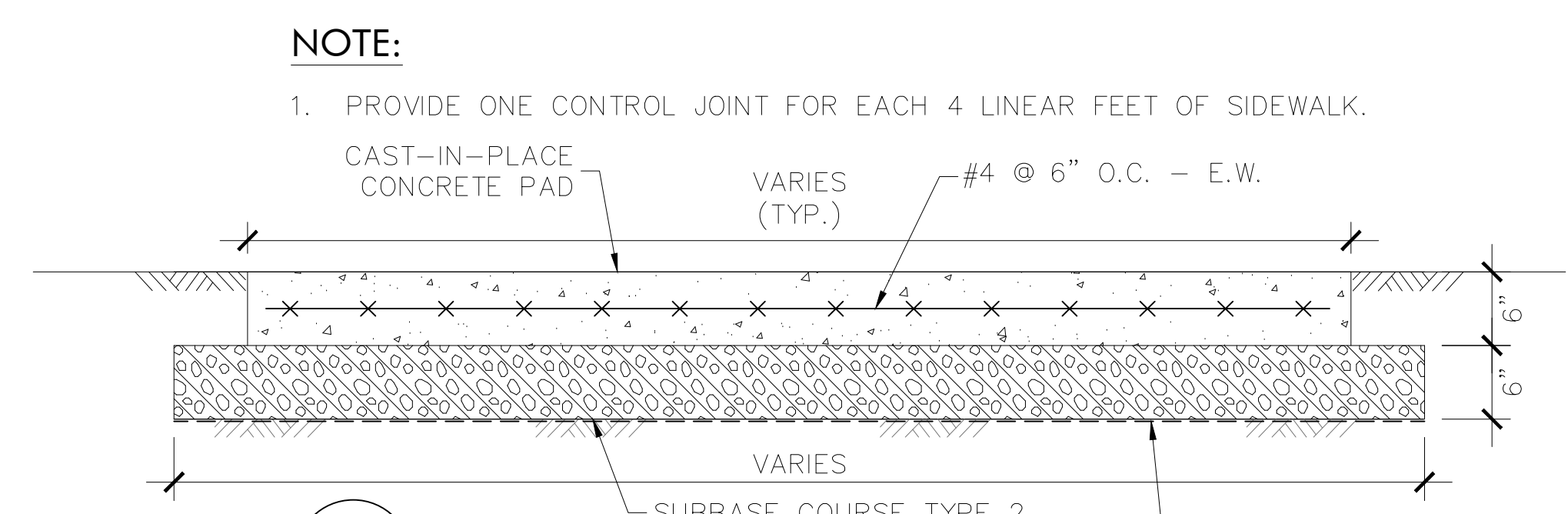


1 C-502 HARD HAT AREA SIGN DETAIL - NTS

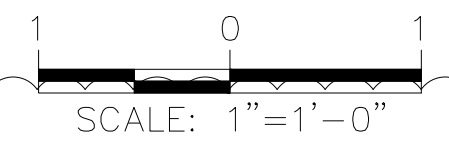
NOTE:
 1. PROVIDE SIGN AS SHOWN, GROUND MOUNT, SINGLE POST.



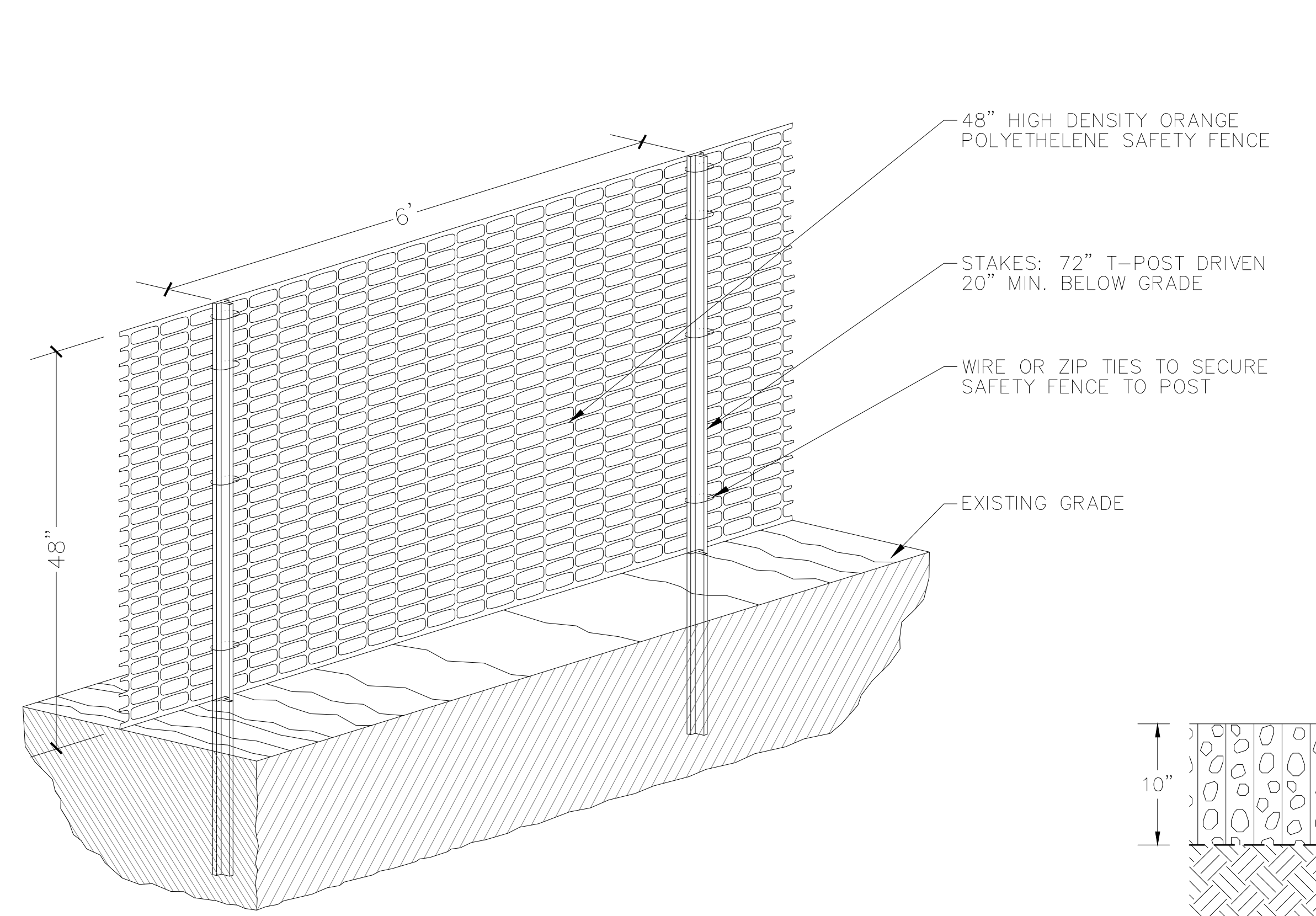
9 C-502 LIGHT STONE FILLING SECTION - NTS



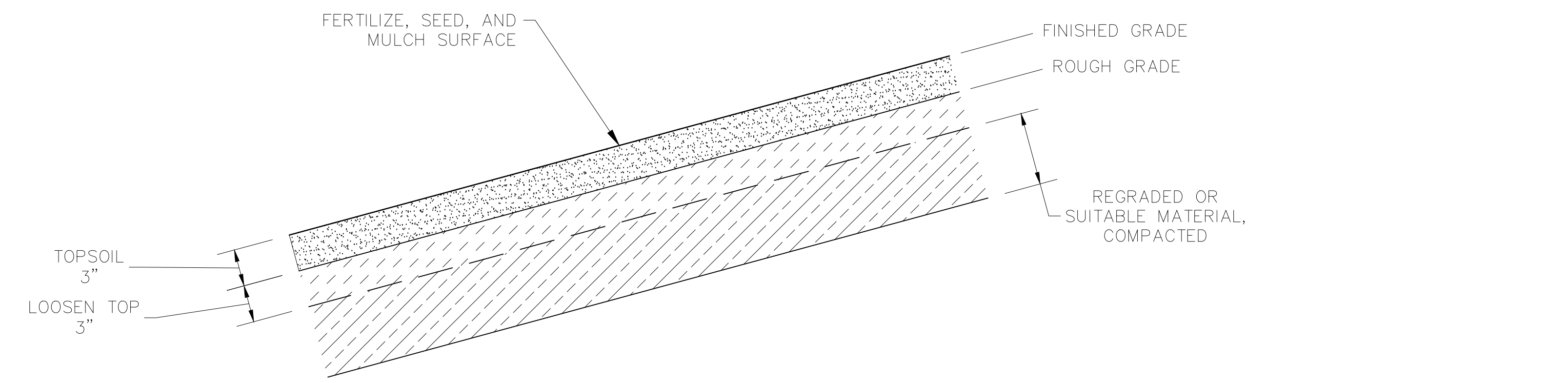
4 C-502 TYPICAL CONCRETE PAD DETAIL



PAD DIMENSIONS	
SHED PAD	12'-2" x 8'-2"
HOT BOX PAD	11'-5" x 6'-11"

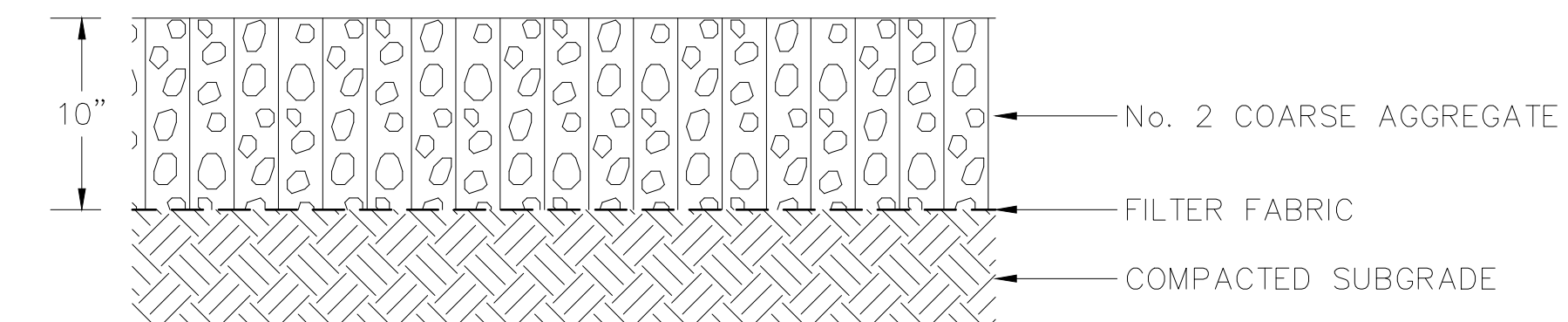


5 C-502 ORANGE TEMPORARY CONSTRUCTION FENCE DETAIL - NTS

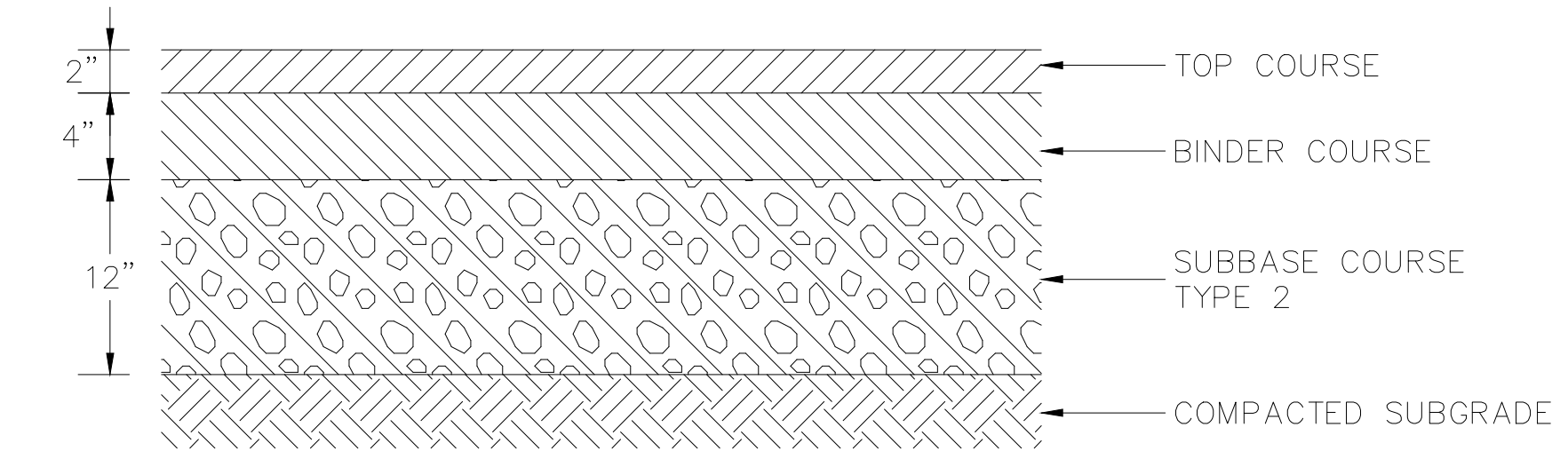


8 C-502 SITE RESTORATION DETAIL - NTS

NOTE:
 1. RESTORE AREAS FINISHED WITH EROSION CONTROL GROUND COVER (SEED MIX "F") OR TURF (SEED MIX "A") WITH TOPSOIL, SEED, FERTILIZER AND MULCH.



6 C-502 TEMPORARY ROAD DETAIL - NTS



7 C-502 PARKING AREA AND MAINTENANCE ROAD PAVEMENT DETAIL NTS

WARNING:
 THE ALTERATION OF THIS MATERIAL IN ANY WAY, UNLESS DONE UNDER THE DIRECTION OF A COMPARABLE PROFESSIONAL, I.E. ARCHITECT FOR AN ARCHITECT, ENGINEER FOR AN ENGINEER OR LANDSCAPE ARCHITECT FOR A LANDSCAPE ARCHITECT, IS A VIOLATION OF THE NEW YORK STATE EDUCATION LAW AND/OR REGULATIONS AND IS A CLASS "A" MISDEMEANOR.

CONTRACT: CONSTRUCTION
 TITLE: PROVIDE ENCLOSED FIRING RANGE QWL SITE
 LOCATION: AUBURN CORRECTIONAL FACILITY QWL SITE
 3579 FRANKLIN STREET ROAD
 SENNETT, NY
 CLIENT: DEPARTMENT OF CORRECTIONS AND COMMUNITY SUPERVISION

MARK	DATE	DESCRIPTION
△	02/13/2019	ADDENDUM #2
	10/15/2018	FINAL SUBMISSION
	5/4/2018	100% SUBMISSION
	1/18/2018	65% SCHEMATIC

PROJECT NUMBER: 45444 - C
 DESIGNED BY: M. DIPASQUALE/B. PRZYBYL/J. KOHLER
 DRAWN BY: A. KELLY
 FIELD CHECK:
 APPROVED:
 SHEET TITLE: MISCELLANEOUS DETAILS AND SIGNS

Feb 14, 2019 - 2:07pm
 J:\16-310-0295 - OGS Statewide Range Design\TO_003 - Auburn\CAD\FINAL SUBMISSION\C-502.dwg
 36x24 PLOT SHEET